



Rotating cleaning nozzle »MicroWhirly« Series 566

Series 566

The MicroWhirly, with effective flat fan nozzles, is licensed for contact with food. Thanks to the robust slide bearing made from PEEK, the MicroWhirly has a particularly long service life. The MicroWhirly is alternatively available with an internal or external thread and in an ATEX version, which allows it to be adapted to a wide range of uses.



Function video
Scan the QR-code or go to:
www.lechler.com/microwhirly



Max. tank diameter [m]

0	1	2	3	4	5	6	7	8	9
---	---	---	---	---	---	---	---	---	---



Materials
316L SS, PEEK,
PEEK ESD (ATEX
version only)



Max. temperature
130 °C
90 °C ATEX Version



Recommended operating pressure
2 bar



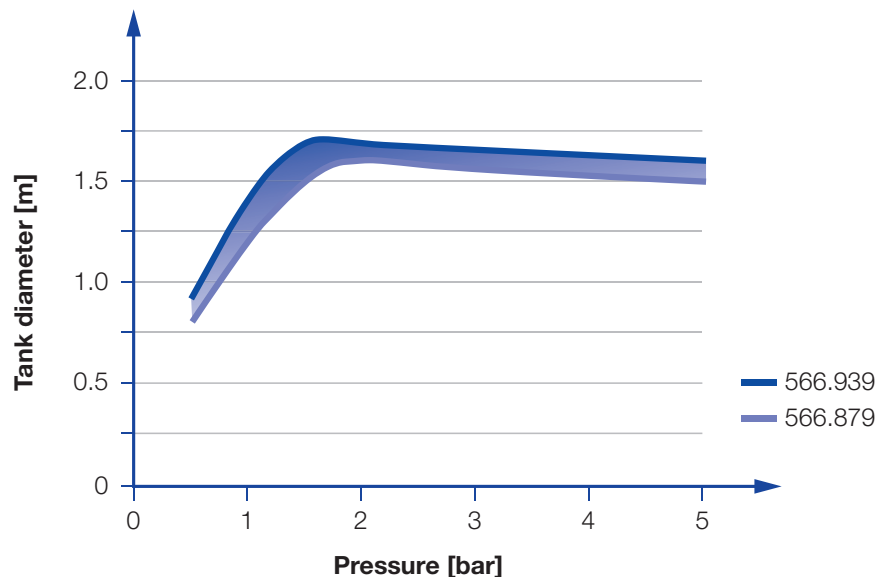
Installation
Operation in every
direction is possible



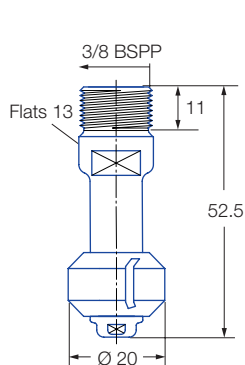
Filtration
Line strainer with
a mesh size of
0.3 mm/50 mesh
0.2 mm/80 mesh
ATEX Version



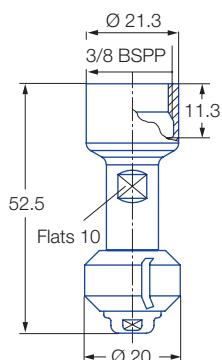
Bearing
Slide bearing made
of PEEK



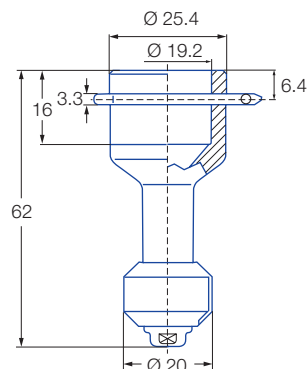
Overview of the tank diameter, depending upon the pressure of series 566







Male thread



Female thread



Dimensions slip-on connection according to ASME-BPE (OD-tube)

Spray angle 	Ordering number				E Ø [mm]	V̇ [l/min]				Max. tank diameter [m]
	Type	Connection				p [bar] (p _{max} = 6 bar)				
		3/8 BSPP* male	3/8 BSPP* female	3/4" Slip-on		1	2	3	at 40 psi [US gal./ min]	
180° 	566.873.1Y	AE	AF	TF	1	12	15	18	5	1.6
	566.933.1Y	AE	AF	TF	2.4	15	21	26	7	1.7
180° 	566.874.1Y	AE	AF	TF	1	12	15	18	5	1.6
	566.934.1Y	AE	AF	TF	2.4	15	21	26	7	1.7
360° 	566.879.1Y	AE	AF	TF	1	12	15	18	5	1.6
	566.939.1Y	AE	AF	TF	2.4	15	21	26	7	1.7

E = narrowest free cross-section · *NPT and weld-on version on request

The maximum tank diameter shown above applies for the recommended operating pressure and is indicative only. The cleaning result is also affected by the type of soiling.

Information on operation

- Operation with compressed air only for short-term usage. Operation above the recommended operating pressure has negative effects on the cleaning result and wear.

Slip-on information

- R-clip made of 316L SS is included (Ordering no.: 095.022.1Y.50.94.E).
- Depending on diameter of the adapter the flow rate can increase due to leakage between connecting pipe and rotating cleaning nozzle.

Example of ordering with ATEX approval. No FDA and (EC) 1935/2004 conformity.

Unit group/category/zones:

II 1 GD c IIB T4 T 120 °C +5 °C ≤ Ta ≤ +90 °C
for zone 0, 1, 2 (gas atmosphere)
for zone 20, 21, 22 (dust atmosphere)



Example Type + Connection = Ordering no.
of ordering: 566.873.1Y.XX.EX + AE = 566.873.1Y.AE.EX

Example of ordering with FDA and (EC) 1935/2004 conformity.

All Materials are suitable for contact with food.



Example Type + Connection = Ordering no.
of ordering: 566.873.1Y.XX + AE = 566.873.1Y.AE

Attention: for the ATEX version of the slip-on connection the code for the connection changes. Example of ordering slip-on connection: 566.873.1Y.TF.EX