

G7

26 mm G1/8 valves and solenoid valves

- G1/8 threaded valve body with traditional Univer spool system
- Versions available 5/2-5/3
- Aluminium multiple sub-base



TECHNICAL CHARACTERISTICS

Ambient temperature	-10 ÷ +45 °C
Fluid temperature	max +50 °C
Fluid	50 µm filtered and not dehumidified air, lubricated or not
Commutation system	spool
Ways/Positions	5/2, 5/3
Pressure	10 bar max
Control	indirect electro - pneumatic, pneumatic
Return	mechanical spring, pneumomechanical spring
Connections	G1/8
Nominal Ø	6 mm
Nominal flow rate	860 NI/min

CONSTRUCTIVE CHARACTERISTICS

Valve body	zamak
Seals	nitrile rubber
Actuators	technopolymer
Spool	aluminium

ELECTRIC CHARACTERISTICS

Electropilot	U1
Coil	DA series
Power consumption	3,5 W (DC) - 5 VA (AC)
Connector	AM-5110
Voltage	12 V DC - 24 V DC - 24 V AC - 110 V AC - 230 V AC
Manual override	with 2 position screw

CODIFICATION KEY

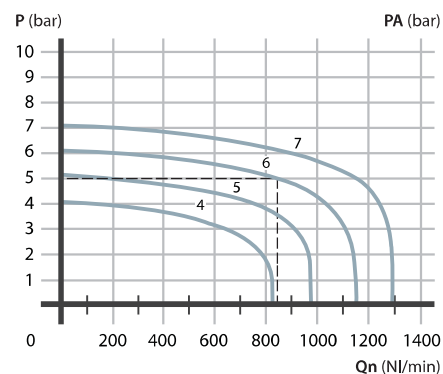
G	7	3	9	0	D
1	2	3	4	5	

1 Series G7 = G1/8 26 mm valves	2 Type 2 = 5/2 3 = 5/3 c.c. 4 = 5/3 o.c. 5 = 5/3 p.c.	3 Control 14 3 = pneumatic on the body 9 = in line electric U1 pilot
---	--	---

4 Return 12 0 = pneumomechanical spring 1 = mechanical spring 3 = pneumatic on the body 9 = in line electric U1 pilot	5 Option D = pilot external servo-assistance on valve body (M5) G = manual override on the valve body (only bistable versions)
--	---

o.c. = open centres c.c. = closed centres p.c. = pressurized centres

Flow rate characteristics



P = Working pressure
PA = Supply pressure
Qn = Flow rate

Single/double electric impulse

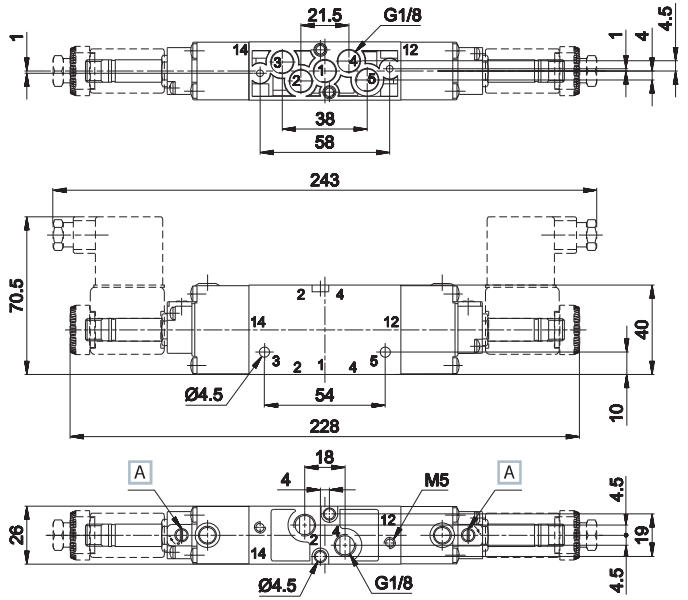
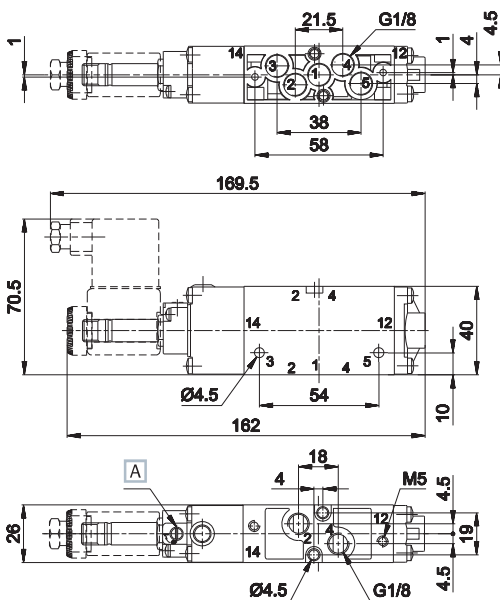


	Symbol	Control	Return	Pressure bar	Times (ms)		Weight Kg	Part no.
					En.	De-en.		
SINGLE ELECTRIC IMPULSE								
5/2		electric amplified	pneumomechanical spring	1,5÷10	15	23	0,214	G-7290
5/2		electric amplified	mechanical spring	1,5÷9	13	34	0,214	G-7291
DOUBLE ELECTRIC IMPULSE								
5/2		electric amplified	electric amplified	0,7÷10	12	12	0,280	G-7299
5/3 c.c.		electric amplified	electric amplified	2÷10	14	18	0,309	G-7399
5/3 o.c.		electric amplified	electric amplified	2÷10	14	18	0,309	G-7499
5/3 p.c.		electric amplified	electric amplified	2÷10	14	18	0,309	G-7599

o.c. = open centres c.c. = closed centres p.c. = pressurized centres

Single electric impulse

Double electric impulse



A Manual override

- 1 = Supply port
- 2 - 4 = Use
- 3 - 5 = Exhaust
- 14 = Control
- 12 = Return

The valve is supplied with two plugs to be mounted with loctite onto the unused 2-4 connections
Electropilots are supplied without coil, connector and locking ring

