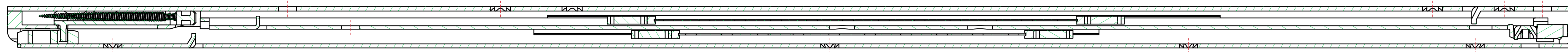
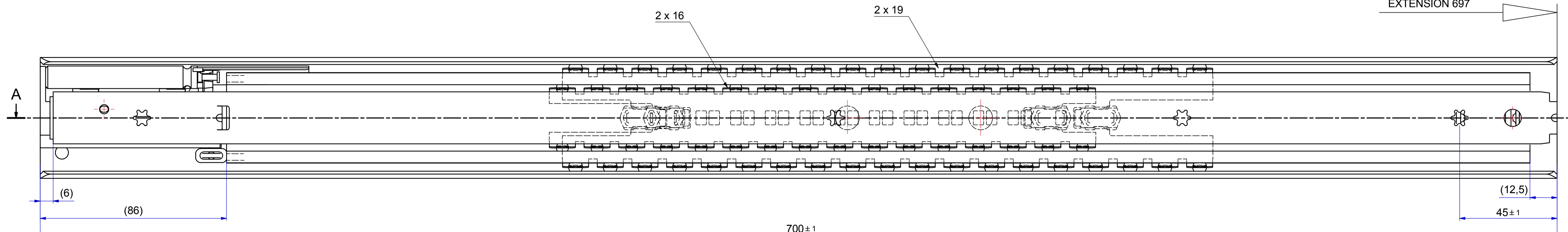
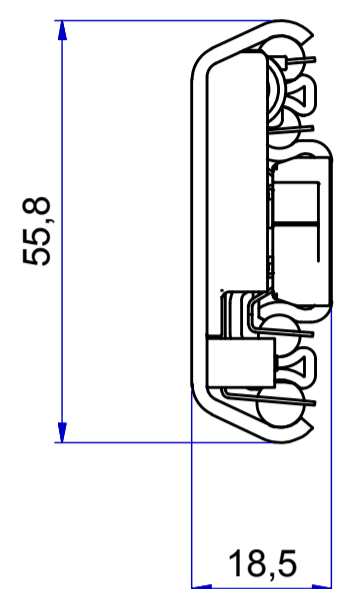


T 1-2 = 310,0 mm
T 2-3 = 387,1 mm



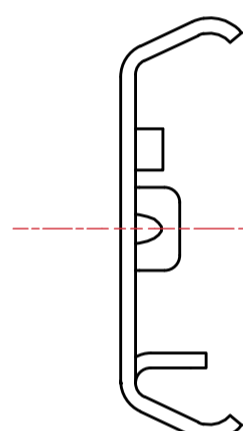
A-A (1:1)

EXTENSION 697 ±4

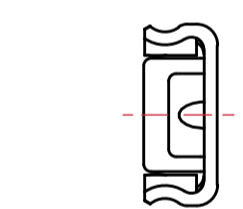
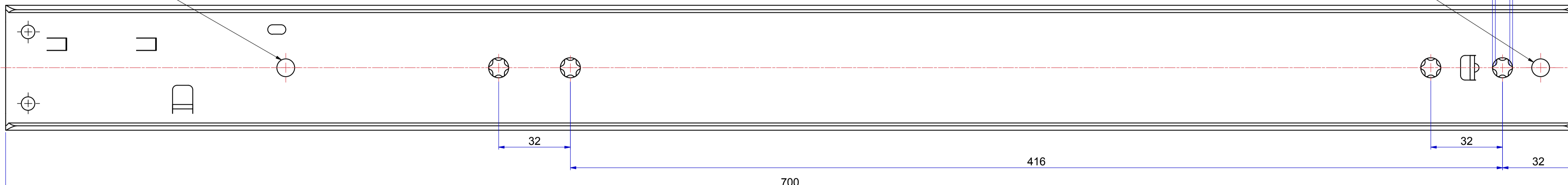


Do not use for customer application!

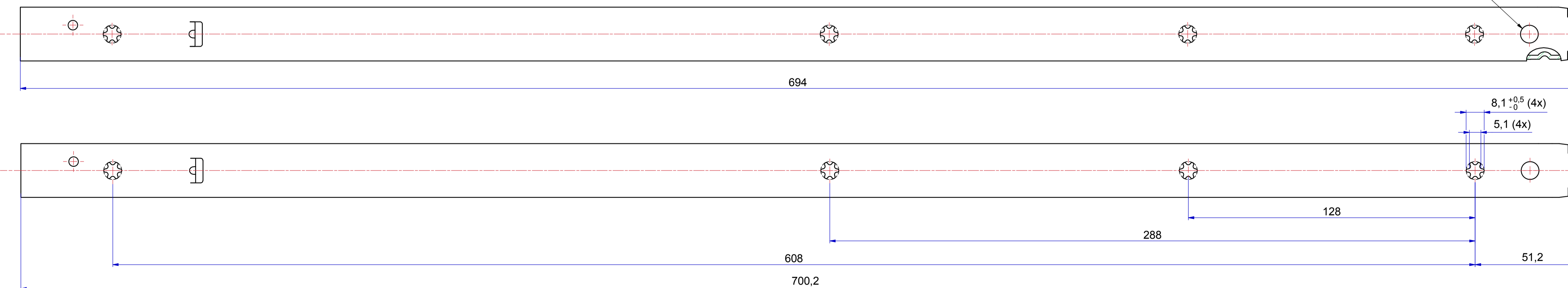
Do not use for customer application!



511-12-S88-HDB



513-12-S88-UB3



Do not use for customer application!

PRODUCTION

Right hand slide = Left hand slide.

Dimensions between marks are guide dimensions.

Thomas Regout Int. B.V. reserves the right to alter non-customer specific specifications without notice.

Designer	M. Mahieu	Gen.Tol.Dim.	± 0.5	Third angle projection	Material
Date	11-10-2011	Gen.Tol.Angle	± 0.5		Treatment
Approver		Gen.Roughness	Ra		Draw type
Date		Units	mm/deg.	Scale	1 : 1
Description					Doc.No.
ULF HD 700.0 / 697.0 (18,5mm)					E000017432
Format					Model No.
A1					E000017418
					Item No.
					112-S88
					Revision
					01
© THOMAS REGOUT INTERNATIONAL BV, Industrieweg 40, 6219 NR, Maastricht, The Netherlands, +31 (0)43 351 66 66 All rights are reserved.					

1	23-1-2014	Loopwerk aangepast tbv. redesign softclose (zie point13002.doc)	M.Peeters
Re	Date	Description	Designer