

NIROSTAR 2000-D | 2000-E | 2000-F

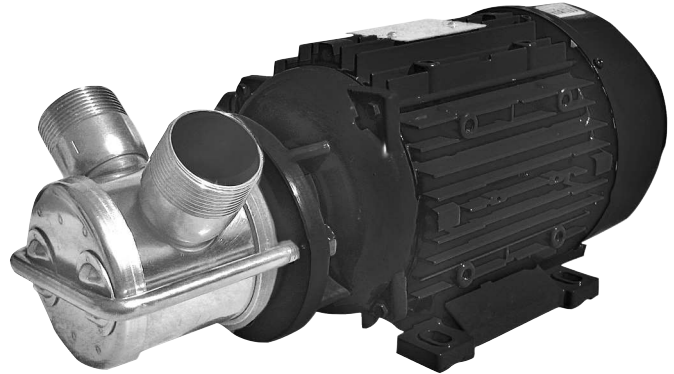
High-quality stainless steel pumps with high liter capacity (also for abrasive and corrosive media) with many possible applications in industry and plant engineering. Often used in the food and beverage industry.

APPLICATIONS

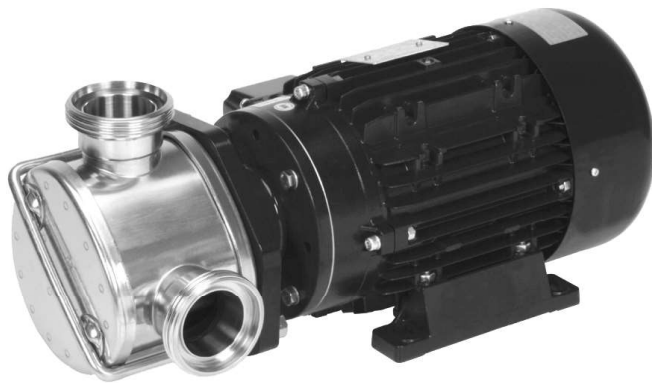
- / Filter
- / Transfer
- / Dosing
- / Filling
- / Drain
- / Decalcify
- / clean

FLUIDS

- / Food, beverage
- / Mash
- / Chemicals
- / Lye
- / Acids
- / Liquid fertilizers
- / Paints
- / Vegetable oils
- / Cooling lubricants
- / Firefighting foam agents
- / Fuel oil, diesel
- / Concrete additives



NIROSTAR 2000-D



NIROSTAR 2000-E

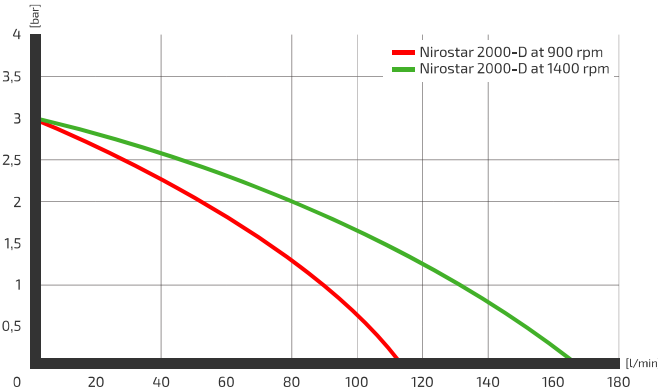


NIROSTAR 2000-F with frequency converter and dry-run protection mounted on pump trolley

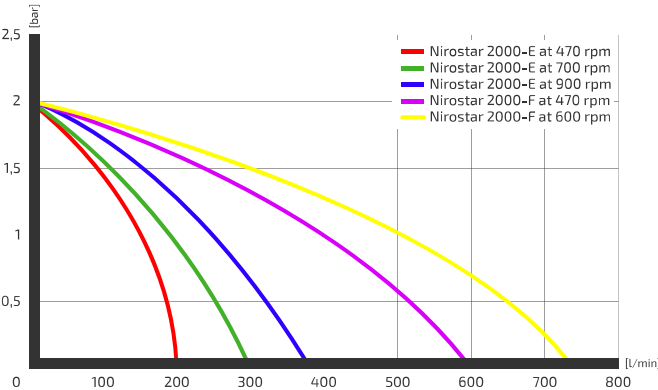
NIROSTAR	2000-D*			2000-E*		2000-F*	
Flow rate max. (l/min.)	115	115	166	300	375	600	730
Discharge pressure max. (bar)*	3			2		2	
Volt	230	400		400		400	
rpm	900	900	1.400	700	900	470	600
Ampere**	13	4,1	3,8	6	5,5	9,5	8,2
Engine output	1,5 kW			1,5 kW	1,87 kW	3,3 kW	3,5 kW
Connections	1½"			2"		3"	
max. temperature	max. 90°C			max. 90°C		max. 90°C	
Weight	20 kg			31 kg	31 kg	69 kg	

* Bi-directional motor **Increased current values during start-up

CHARACTERISTIC CURVES NIROSTAR D



CHARACTERISTIC CURVES NIROSTAR E AND F



NIROSTAR 2001-D | 2001-E | 2001-F

The Nirostar variants without drive make it possible to implement individual solutions. Particularly where space is limited or a drive is already available, these pumps with their high capacity are ideal for use.



NIROSTAR 2001-D without drive



NIROSTAR 2001-F without drive

NIROSTAR	2001-D	2001-E	2001-F
Flow rate max. (l/min.)	115	375	730
Discharge pressure max. (bar)	3	2	
Volt	NIROSTAR without drive		
rpm			
Ampere			
Engine output			
Connections	1½"	2"	3"
max. temperature	max. 90°C		
Weight	5,4 kg	9,7 kg	15,7 kg