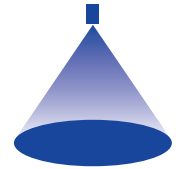


# ➤ Axial-flow full cone nozzles Series 468



### Features:

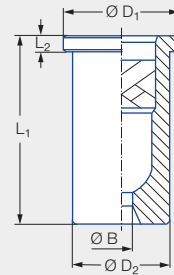
- Extremely uniform liquid distribution
- Assembly with retaining nut

### Applications:

- Surface spraying
- Chemical process engineering
- Cleaning and washing processes
- Water treatment



Series 468



Code	Dimensions [mm]			Weight [g] (brass)
	L <sub>2</sub>	Ø D <sub>1</sub>	Ø D <sub>2</sub>	
Assembly with retaining nut 3/8 BSPP	2.00	14.80	12.65	18.00

Spray angle	Ordering no.				Bore diameter B [mm]	Narrowest free cross sections Ø [mm]	L <sub>1</sub> [mm]	V̇ water [l/min]						Spray diameter D [mm] (at p = 2 bar)	
	Type	Mat. no.						p [bar]						H = 250 [mm]	H = 500 [mm]
		17 <sup>1</sup>	30	5E				0.5	1.0	2.0	3.0	5.0	10.0		
60°	468.604	●	●		2.05	1.40	18.00	1.81	2.39	<b>3.15</b>	3.70	4.54	6.00	280	560
	468.644		●	●	2.40	1.90	24.50	2.30	3.03	<b>4.00</b>	4.70	5.77	7.61	290	570
	468.684		●		2.60	2.00	24.50	2.87	3.79	<b>5.00</b>	5.88	7.21	9.52	300	580
	468.724	●	●		2.90	2.00	24.50	3.62	4.77	<b>6.30</b>	7.41	9.09	11.99	310	590
90°	468.526	●	●	●	1.65	1.30	18.00	1.15	1.52	<b>2.00</b>	2.35	2.89	3.81	460	780
	468.846	●	●		4.05	3.20	24.50	7.18	9.47	<b>12.50</b>	14.70	18.03	23.80	500	920
120°	468.368		●		0.95	0.70	18.00	0.36	0.48	<b>0.63</b>	0.74	0.91	1.20	740	1,750
	468.408	●	●		1.20	0.85	18.00	0.57	0.76	<b>1.00</b>	1.18	1.44	1.90	740	1,750
	468.488	●	●		1.50	1.00	18.00	0.92	1.21	<b>1.60</b>	1.88	2.31	3.05	740	1,750
	468.528	●	●		1.65	1.20	18.00	1.15	1.52	<b>2.00</b>	2.35	2.89	3.81	740	1,750

<sup>1</sup> We reserve the right to supply material 316Ti or 316L under material no. 17.

Conversion formula for this series:  $\dot{V}_2 = \dot{V}_1 \cdot \left(\frac{p_2}{p_1}\right)^{0.4}$   
(≤ 10 bar)

Ordering Type + Material no. = Ordering no.  
example: 468.604 + 17 = 468.604.17



Assembly accessories can be found in Chapter 9 "Accessories".