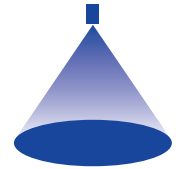


# ➤ Axial-flow full cone nozzles Series 405

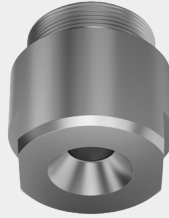


### Features:

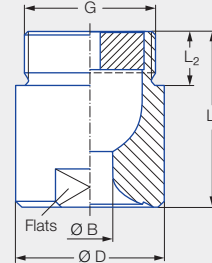
- Extremely uniform liquid distribution

### Applications:

- Surface spraying
- Chemical process engineering
- Cleaning and washing processes
- Water treatment



Series 405



Code	G	Dimensions [mm]				Weight [kg] (brass)
		L <sub>1</sub>	L <sub>2</sub>	Ø D	Flats	
<b>AP</b>	1 1/4 BSPP	50.0	19.0	49.0	41	0.5
<b>AR</b>	1 1/2 BSPP	60.0	19.0	59.0	50	0.9
<b>AV</b>	2 BSPP	78.0	24.0	68.0	60	1.6

Spray angle	Ordering no.						Bore diameter B [mm]	Narrowest free cross sections Ø [mm]	V̇ water [l/min]						Spray diameter D [mm] (at p = 2 bar)	
	Type	Mat. no.		Code					p [bar]						H = 500 [mm]	H = 1,000 [mm]
		1Y	30	1 1/4 BSPP	1 1/2 BSPP	2 BSPP			0.3	0.5	1.0	2.0	3.0	5.0		
		Stainless steel 316L	Brass													
60°	<b>405.204</b>	●	●	<b>AP</b>			11.2	5.8	47	57	76	<b>100</b>	118	144	600	1,140
	<b>405.284</b>	●	●		<b>AR</b>		14.3	7.0	75	92	121	<b>160</b>	188	231	630	1,210
	<b>405.324</b>	●	●			<b>AV</b>	16.4	7.5	94	115	152	<b>200</b>	235	289	650	1,250
	<b>405.364</b>	●	●			<b>AV</b>	18.4	8.5	117	144	189	<b>250</b>	294	361	650	1,250
	<b>405.404</b>	●	●			<b>AV</b>	20.0	7.0	147	181	239	<b>315</b>	370	454	650	1,250
90°	<b>405.206</b>	●	●	<b>AP</b>			12.0	5.0	47	57	76	<b>100</b>	118	144	1,120	2,100
	<b>405.286</b>	●	●		<b>AR</b>		15.2	6.2	75	92	121	<b>160</b>	188	231	1,120	2,100
	<b>405.326</b>	●	●			<b>AV</b>	17.2	7.7	94	115	152	<b>200</b>	235	289	1,120	2,100
	<b>405.366</b>	●	●			<b>AV</b>	19.5	8.7	117	144	189	<b>250</b>	294	361	1,120	2,100
	<b>405.406</b>	●	●			<b>AV</b>	22.0	9.5	147	181	239	<b>315</b>	370	454	1,120	2,100
120°	<b>405.208</b>	●	●	<b>AP</b>			12.7	5.0	47	57	76	<b>100</b>	118	144	1,850	3,050
	<b>405.288</b>	●	●		<b>AR</b>		16.0	6.6	75	92	121	<b>160</b>	188	231	1,900	3,150
	<b>405.328</b>	●	●			<b>AV</b>	17.8	7.9	94	115	152	<b>200</b>	235	289	1,900	3,200
	<b>405.368</b>	●	●			<b>AV</b>	20.1	8.8	117	144	189	<b>250</b>	294	361	1,900	3,200
	<b>405.408</b>	●	●			<b>AV</b>	22.4	9.1	147	181	239	<b>315</b>	370	454	1,900	3,200

Conversion formula for this series:  $\dot{V}_2 = \dot{V}_1 \cdot \left(\frac{p_2}{p_1}\right)^{0.4}$   
(≤ 10 bar)

Ordering Type + Material no. + Code = Ordering no.  
example: 405.204 + 1Y + AP = 405.204.1Y.AP

Assembly accessories can be found in Chapter 9 "Accessories".