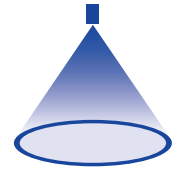


# ➤ Eccentric hollow cone nozzles Series 373 Ramp Bottom

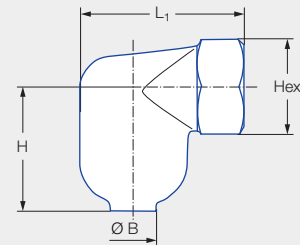
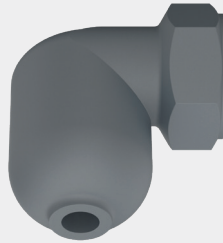


### Features:

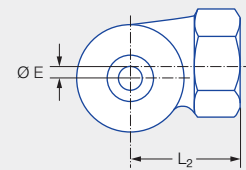
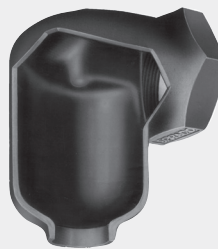
- Fine, uniform atomization even at low pressure
- Patented swirl chamber with built-in ramp extends service life

### Applications:

- Gas cooling
- Water recooling
- Dust control



Series 373



Code	G	Dimensions [mm]					Weight [g]
		H	L <sub>1</sub>	L <sub>2</sub>	Ø E	Hex	
<b>AN</b>	1 BSPP	52.0	67.0	45.0	6.3	41	285.0
<b>AQ</b>	1 1/4 BSPP	65.0	77.0	51.0	7.9	48	570.0
<b>AS</b>	1 1/2 BSPP	81.0	97.0	65.0	7.9	58	900.0

Spray angle	Ordering no.				Bore diameter B [mm]	V̇ water [l/min]						Spray diameter D [mm] (at p = 2 bar)		
	Type	Mat. no.	Code			p [bar]						H = 500 [mm]	H = 1,000 [mm]	
		17	1 BSPP	1 1/4 BSPP		1 1/2 BSPP	0.3	0.5	1.0	<b>2.0</b>	5.0			10.0
80°	<b>373.115</b>	●	<b>AN</b>			11.40	24.40	31.50	44.55	<b>63.00</b>	99.61	140.87	670	1,200
	<b>373.175</b>	●	<b>AN</b>			12.90	30.98	40.00	56.57	<b>80.00</b>	126.49	178.89	800	1,450
	<b>373.235</b>	●		<b>AQ</b>		16.20	45.70	59.00	83.44	<b>118.00</b>	186.57	263.86	750	1,300
	<b>373.285</b>	●		<b>AQ</b>		20.50	61.97	80.00	113.14	<b>160.00</b>	252.98	357.77	800	1,350
	<b>373.325</b>	●			<b>AS</b>	22.20	77.46	100.00	141.42	<b>200.00</b>	316.23	447.21	900	1,500
	<b>373.365</b>	●			<b>AS</b>	23.60	87.92	113.50	160.51	<b>227.00</b>	358.92	507.59	830	1,400

Conversion formula for this series:  $\dot{V}_2 = \dot{V}_1 \cdot \sqrt{\frac{p_2}{p_1}}$

Ordering Type + Material no. + Code = Ordering no.  
example: 373.115 + 17 + AN = 373.115.17.AN



Assembly accessories can be found in Chapter 9 "Accessories".