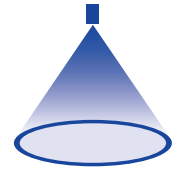


# ➤ Axial-flow hollow cone nozzles

## Series 214/216

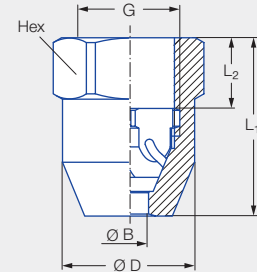
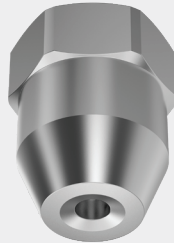


### Features:

- Fine, uniform atomization

### Applications:

- Cooling
- Gas washing
- Dust control
- Sprinkling
- Adiabatic cooling



Series 214/216

Series	G	Dimensions [mm]				Weight [kg] (Brass)
		L <sub>1</sub>	L <sub>2</sub>	Ø D	Hex	
214	1/8 BSPP	18.0	6.0	16.0	17	27.0
216	3/8 BSPP	29.0	12.0	21.3	22	60.0

Spray angle	Ordering no.			Bore diameter B [mm]	Narrowest free cross section Ø [mm]	V̇ water [l/min]							Spray diameter D [mm] (at p = 5 bar)
	Type	Mat. no.				p [bar]							
		17	30			0.5	1.0	2.0	3.0	5.0	10.0	20.0	
		Stainless steel 316Ti	Brass			H = 250 [mm]							
60°	214.184	●	●	0.50	0.50	–	–	0.08	0.10	<b>0.13</b>	0.18	0.25	120
	216.324	●	●	1.00	1.00	–	0.28	0.40	0.49	<b>0.63</b>	0.89	1.26	190
	216.364	●	●	1.40	1.40	–	0.45	0.63	0.77	<b>1.00</b>	1.41	1.99	220
	216.404	●	●	2.00	2.00	–	0.71	1.00	1.22	<b>1.58</b>	2.24	3.16	240
80°	214.245	●	●	1.00	0.50	–	–	0.16	0.20	<b>0.25</b>	0.36	0.51	240
	214.305	●	●	1.80	0.50	–	0.23	0.32	0.39	<b>0.51</b>	0.72	1.01	320
90°	216.496	●	●	3.00	2.00	–	1.20	1.70	2.08	<b>2.69</b>	3.80	5.38	430
	216.566	●	●	4.00	2.00	–	1.77	2.50	3.06	<b>3.95</b>	5.59	7.91	430
	216.646	●	●	3.50	2.00	2.00	2.83	4.00	4.90	<b>6.32</b>	8.94	12.65	440
	216.686	●	●	4.00	2.00	2.50	3.54	5.00	6.12	<b>7.91</b>	11.18	15.81	450
	216.726	●	●	5.00	2.00	3.15	4.45	6.30	7.72	<b>9.96</b>	14.09	19.92	460
	216.776	●	●	6.00	2.00	4.30	6.00	8.50	10.40	<b>13.40</b>	19.00	26.90	470

Conversion formula for this series:  $\dot{V}_2 = \dot{V}_1 \cdot \sqrt{\frac{p_2}{p_1}}$

Ordering Type + Material no. = Ordering no.  
example: 214.184 + 17 = 214.184.17



Assembly accessories can be found in Chapter 9 "Accessories".