

➤ Nozzle systems for surface treatment

Series 676 Easy-Clip



Features:

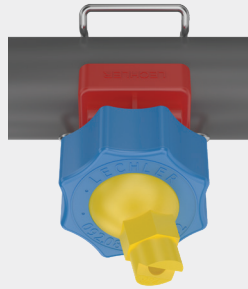
- Simple, quick nozzle assembly without the need for tools
- All-round 30° swivelling
- Easy adjustment and cleaning

Applications:

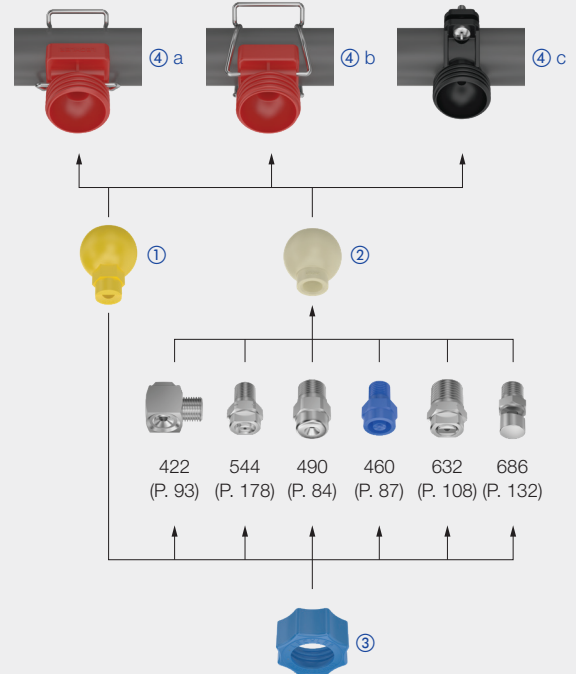
- Degreasing
- Phosphating in surface treatment
- Industrial cleaning
- Container washers

Materials:

- Clamp: Stainless steel 301
- Gasket: EPDM
- Cylinder pin, screw, screw unit: Stainless steel 316L
- Body, retaining nut: Polypropylene, glass fibre reinforced
- Ball nozzle, ball joint: Polypropylene



Assembly example



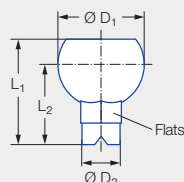
Sets – series 676 Easy-Clip

| Designation | Spray angle | Ordering no. | Nozzle Color | V̇ [l/min] | | | | |
|--|-------------|---------------|--------------|------------|-------|-------|--------------|-------|
| | | | | p [bar] | | | | |
| | | | | 0.5 | 1.0 | 1.5 | 2.0 | 2.5 |
| Set 1 consisting of: Ball nozzle Single clamp for 1 1/4" pipe Retaining nut | 60° | 676.724.53.31 | Grey | 3.15 | 4.45 | 5.45 | 6.30 | 7.04 |
| | | 676.764.53.31 | Brown | 4.00 | 5.66 | 6.93 | 8.00 | 8.94 |
| | | 676.804.53.31 | Purple | 5.00 | 7.07 | 8.66 | 10.00 | 11.18 |
| | | 676.844.53.31 | Yellow | 6.25 | 8.84 | 10.83 | 12.50 | 13.98 |
| | | 676.884.53.31 | Red | 8.00 | 11.31 | 13.85 | 16.00 | 17.89 |
| | | 676.904.53.31 | Blue | 9.10 | 12.87 | 15.76 | 18.20 | 20.35 |
| | | 676.924.53.31 | Green | 10.00 | 14.14 | 17.32 | 20.00 | 22.36 |

| Designation | Ordering no. | Ball Color | BSPP | Matches series |
|---|---------------|------------|------|-----------------------------------|
| | | | | |
| Set 2 consisting of: Ball joint Single clamp for 1 1/4" pipe Retaining nut | 092.081.53.AB | Beige | 1/8 | 460, 490, 632, 686, 610, 544 |
| | 092.081.53.AD | Beige | 1/4 | 422, 460, 490, 544, 612, 632, 686 |
| | 092.081.53.AF | Beige | 3/8 | 422, 460, 490, 632, 686, 688 |
| | 092.081.53.AH | Beige | 1/2 | 422, 460, 490, 632, 686 |

Individual parts – series 676 Easy-Clip

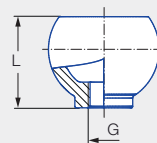
① Ball nozzle



| Dimensions [mm] | | | | |
|-----------------|----------------|------------------|------------------|-------|
| L ₁ | L ₂ | Ø D ₁ | Ø D ₂ | Flats |
| 41.5 | 31.5 | 34.0 | 15.0 | 16.0 |

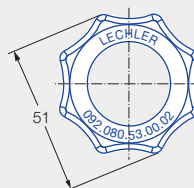
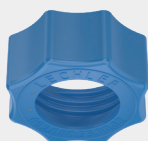
| Designation | Spray angle | Ordering no. Type | Nozzle Color | V̇ [l/min] | | | | |
|---------------|-------------|----------------------|--------------|------------|-------|-------|--------------|-------|
| | | | | p [bar] | | | | |
| | | | | 0.5 | 1.0 | 1.5 | 2.0 | 2.5 |
| ① Ball nozzle | 60° | 676.724.53.30.01 | Grey | 3.15 | 4.45 | 5.45 | 6.30 | 7.04 |
| | | 676.764.53.30.01 | Brown | 4.00 | 5.66 | 6.93 | 8.00 | 8.94 |
| | | 676.804.53.30.01 | Purple | 5.00 | 7.07 | 8.66 | 10.00 | 11.18 |
| | | 676.844.53.30.01 | Yellow | 6.25 | 8.84 | 10.83 | 12.50 | 13.98 |
| | | 676.884.53.30.01 | Red | 8.00 | 11.31 | 13.85 | 16.00 | 17.89 |
| | | 676.904.53.30.01 | Blue | 9.10 | 12.87 | 15.67 | 18.20 | 20.35 |
| | | 676.924.53.30.01 | Green | 10.00 | 14.14 | 17.32 | 20.00 | 22.36 |
| Blind nozzle | – | 092.080.53.00.01 | Grey | – | – | – | – | – |

② Ball joint



| Designation | Ordering no. | Ball Color | BSPP | L [mm] | Matches series |
|--------------|------------------|------------|------|--------|-----------------------------------|
| | Type | | | | |
| ② Ball joint | 092.080.53.AB.01 | Beige | 1/8 | 28.4 | 460, 490, 632, 686, 610, 544 |
| | 092.080.53.AD.01 | Beige | 1/4 | 32.4 | 422, 460, 490, 544, 612, 632, 686 |
| | 092.080.53.AF.01 | Beige | 3/8 | 31.4 | 422, 460, 490, 632, 686, 688 |
| | 092.080.53.AH.01 | Beige | 1/2 | 33.0 | 422, 460, 490, 632, 686 |

③ Retaining nut



| Designation | Ordering no. |
|-----------------|------------------|
| | Type |
| ③ Retaining nut | 092.080.53.00.02 |

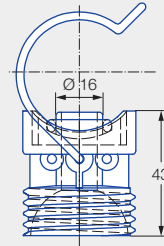


➤ Nozzle systems for surface treatment

Series 676 Easy-Clip

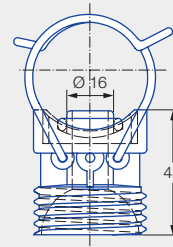
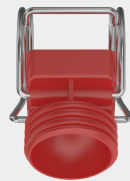
④ a Single clamp

092.08x.53.00



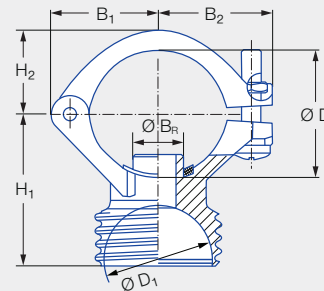
④ b Double clamp

092.09x.53.00



④ c Eyelet clamp

090.0x3.53.43.10



| Designation | Ordering no. | Dimensions [mm] | | | | | $\varnothing B_R^1$ [mm] | Recommend- ed bore diameter [mm] | Pipe \varnothing ($\varnothing D$) [mm] | Weight [g] |
|------------------|------------------|-----------------|----------------|----------------|----------------|-------------------|-----------------------------|--|---|---------------|
| | | B ₁ | B ₂ | H ₁ | H ₂ | $\varnothing D_1$ | | | | |
| ④ a Single clamp | 092.080.53.00 | – | – | – | – | – | 16.3* | 16.5–17.0 | 1" (32.0–34.5) | 36.0 |
| | 092.081.53.00 | – | – | – | – | – | 16.3* | 16.5–17.0 | 1 1/4" (40.0–43.0) | 38.0 |
| | 092.082.53.00 | – | – | – | – | – | 16.3* | 16.5–17.0 | 1 1/2" (46.0–49.0) | 40.0 |
| | 092.083.53.00 | – | – | – | – | – | 16.3* | 16.5–17.0 | 2" (58.0–62.0) | 42.0 |
| ④ b Double clamp | 092.090.53.00 | – | – | – | – | – | 16.3* | 16.5–17.0 | 1" (32.0–34.5) | 46.0 |
| | 092.091.53.00 | – | – | – | – | – | 16.3* | 16.5–17.0 | 1 1/4" (40.0–43.0) | 48.0 |
| | 092.092.53.00 | – | – | – | – | – | 16.3* | 16.5–17.0 | 1 1/2" (46.0–49.0) | 50.0 |
| | 092.093.53.00 | – | – | – | – | – | 16.3* | 16.5–17.0 | 2" (58.0–62.0) | 52.0 |
| ④ c Eyelet clamp | 090.023.53.43.10 | 30.0 | 32.0 | 44.5 | 23.0 | 34.0 | 16.3** | 16.5–17.0 | 1" (32.0–34.5) | 48.0 |
| | 090.033.53.43.10 | 33.0 | 36.0 | 48.0 | 27.0 | 34.0 | 16.3** | 16.5–17.0 | 1 1/4" (40.0–43.0) | 50.0 |
| | 090.043.53.43.10 | 36.0 | 35.0 | 52.0 | 30.0 | 34.0 | 16.3** | 16.5–17.0 | 1 1/2" (46.0–49.0) | 52.0 |

* Other spigot diameters (13.8/19.0 mm) available on request.

** Other spigot diameters (13.8/20.0 mm) available on request.

¹ $\varnothing B_R$ = spigot diameter.