

DIAPHRAGM PUMPS



OVERVIEW

- High dosing accuracy
- Safe to run dry
- Leakage free
- Low-maintenance
- User-friendly
- Continuous, manual stroke length adjustment
- Motor suitable for operation with frequency converter
- Robust, metallic drive housing
- Compact design
- Low weight

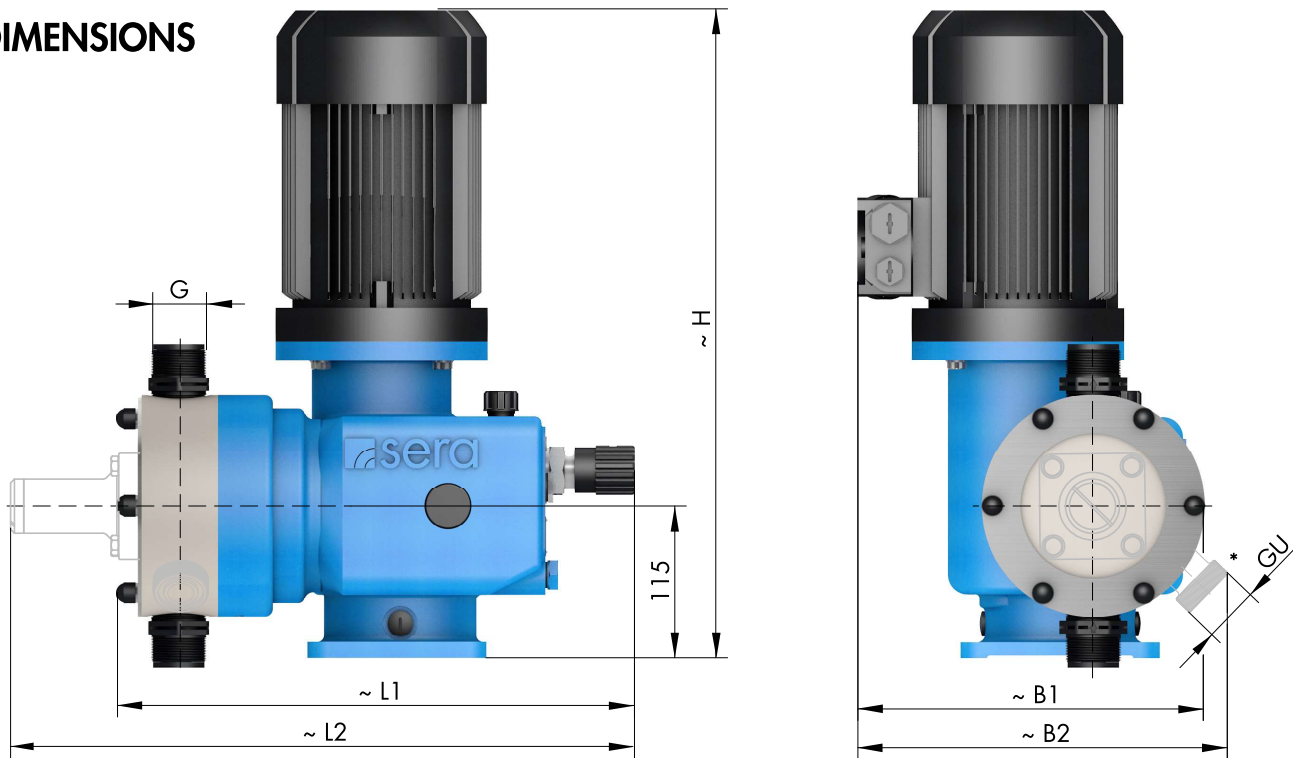
TECHNICAL DATA

PUMP DATA			RF 410.2-...			
			280e	570e	900e	1450e
Permissible pressure p_{2max} at the pump outlet	bar		8	6	5	5 *
Nominal capacity QN at p_{2max}	l/h	50 Hz	0-280	0-570	0-900	0-1.450
		60 Hz	0-336	0-684	0-1.080	0-1.740
Quantity per stroke	ml/stroke (100%)		46	98	155	245
Max. suction height	mWC		5	5	3	3
Min./max. permissible pressure at the pump inlet	bar	$p_{1min/max}$	-0,5/0	-0,5/0	-0,3/0	-0,3/0
Recommended nominal diameter DN of the connecting pipes	mm		15	15	20	25
Nominal stroke frequency	1/min	50 Hz	97	97	97	97
		60 Hz	116	116	116	–
Weight approx.	kg	plastic	35	35	37	41
		stainless steel	42	42	52	59

* at 60 Hz is the permissible pressure 3,5 bar

ELECTRICAL DATA		RF 410.2-...			
		280e	570e	900e	1450e
Power consumption	kW	0,75	0,75	1,1	1,5
Voltage	V	230/400V 50Hz, 460V 60Hz			
Frequency	Hz	50/60			
Insulation class	ISO	F			
Enclosure	IP	55			

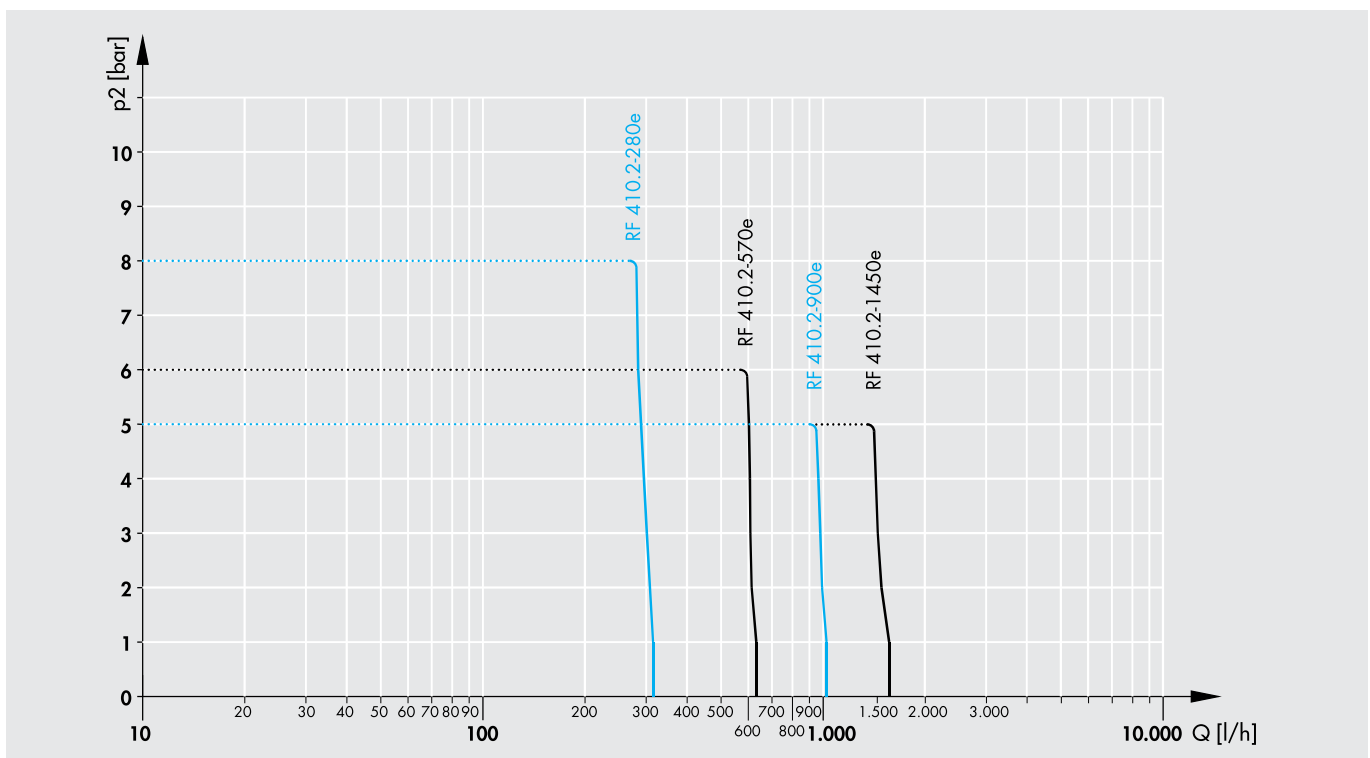
DIMENSIONS



	G	GU		B1	B2	L1	L2	H		B1	B2	L1	L2	H
RF 410.2-280e	G1¼*	G1¼*	PVC, PP, PVDF	261	279	403	484	510	1.4571	261	287	400	484	510
RF 410.2-570e	G1¼*	G1¼*		261	279	403	484	510		261	287	400	484	510
RF 410.2-900e	G1¼	×		287	×	428	×	510		278	×	425	×	510
RF 410.2-1450e	G1¼	×		297	×	428	×	550		297	×	425	×	550

* PVC = G1

CHARACTERISTIC CURVES



DIAPHRAGM PUMPS

BASIC DESIGNS

PP

Pump body **PP**
 Valves **PP-FRP**
 Valve balls **PTFE**
 Diaphragm **PTFE-faced**

Type	EPDM Article-No.	Valve seals		Price (EUR)
		Price (EUR)	FPM Article-No.	
RF410.2-280e	16017347	☉	16006793	☉
RF410.2-570e	16006711	☉	16007252	☉
RF410.2-900e	16013635	☉	16013926	☉
RF410.2-1450e	16010632	☉	16018420	☉

PVDF

Pump body **PVDF**
 Valves **PVDF-FRP**
 Valve balls **PTFE**
 Diaphragm **PTFE-faced**

Type	Valve seals		Price (EUR)
	FEP-covered Article-No.		
RF410.2-280e	16023909	☉	
RF410.2-570e	16023910	☉	
RF410.2-900e	16014495	☉	
RF410.2-1450e	16023677	☉	

PVC-U

Pump body **PVC-U**
 Valves **PVC-U**
 Valve balls **PTFE**
 Diaphragm **PTFE-faced**

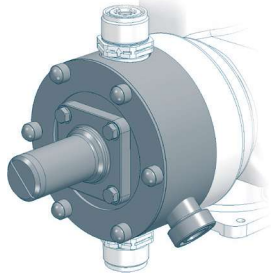
Type	EPDM Article-No.	Valve seals		Price (EUR)
		Price (EUR)	FPM Article-No.	
RF410.2-280e	16009107	☉	16013181	☉
RF410.2-570e	16013411	☉	16007243	☉
RF410.2-900e	16012282	☉	16013170	☉
RF410.2-1450e	16021259	☉	16016460	☉

STAINLESS STEEL

Pump body **1.4571**
 Valves **1.4571/1.4581**
 Valve balls **1.4401**
 Diaphragm **PTFE-faced**

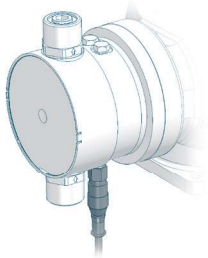
Type	Valve seals		Price (EUR)
	FEP-covered Article-No.		
RF410.2-280e	16012324	☉	
RF410.2-570e	16014802	☉	
RF410.2-900e	16008500	☉	
RF410.2-1450e	16019211	☉	

OPTIONS



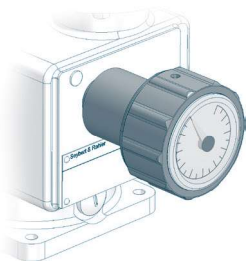
Integrated relief valve

Diaphragm: PTFE-faced		Connecting seals: EPDM or FPM	Surcharge (EUR)
PP	...410.2-280e, ...-570e		▲
PVC	...410.2-280e, ...-570e		▲
PVDF	...410.2-280e, ...-570e		Ⓞ
1.4571	...410.2-280e, ...-570e		▲
PP, PVDF, PVC-U, 1.4571	...410.2-900e, ...-1450e		×
Connecting seals FEP-covered		all types	▲



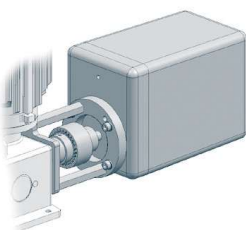
Diaphragm monitoring

Diaphragm rupture electrode, conductive, mounted on pump (Evaluation via electrode relay, ER-104 (see accessories))			Surcharge (EUR)
MBE-02	incl. connection cable	(length 2m)	▲
Connection cable for EEXia-circuit		(blue, length 5m)	▲



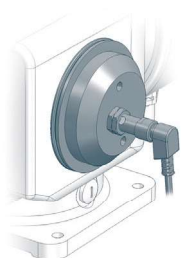
Stroke length adjustment

			Surcharge (EUR)
with position indicator			▲
		...410.2-280e, -570e, 900e	▲
		...410.2-1450e	▲



Stroke length adjustment with actuator

(version uL/CSA on request)		Surcharge (EUR)
Actuator N1S	230V, 50/60Hz, 128s/10 U, 15Nm Potentiometer 1 kΩ (incl. mounting set)	▲
Electronic positioning controller ESR-N (only integrated in N1S)	Input signal 0/4 - 20mA including feedback signal 0/4 - 20mA	▲
Actuator D30D-10-Ex II2G EExde IIC T4 acc. to ATEX95	400V, 50Hz, 10 U/min incl. mounting set and base plate	▲



Stroke frequency monitoring

Inductive contact		Surcharge (EUR)
10 - 60 V DC, three-wire, PNP		▲
NAMUR-design, II2G EExia IIC T6 (acc. to ATEX95)		▲

DIAPHRAGM PUMPS

OPTIONS



Drive motor

- Please note: If one or several options 'drive motor' are required to fix the add. price of the drive, the calculation will be as follows: 'add. price special drive' plus the single options of the drive.
- Surcharge and availability must be requested from **sera**.

Surcharge special drive		Surcharge (EUR)
RF 410.2-280e, ...-570e, ...-900e		▲
RF 410.2-1450e		▲
Special voltage	(all types)	Ⓞ
Enclosure IP65	(all types)	▲
Protection roof	(all types)	▲
VIK design	(all types)	Ⓞ
Electrical acc. to uL/CSA	(all types)	Ⓞ

Single-phase alternating current motor, 230V/50Hz with capacitor

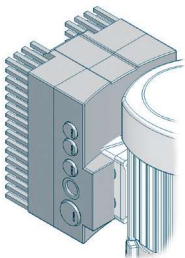
RF 410.2-280e, ...-570e, ...-900e	▲
RF 410.2-1450e	▲

II2G EExe II T4 (acc. to ATEX95)

R 410.2-280e, ...-570e	▲
R 410.2-900e	▲
R 410.2-1450e	▲

II2G EExde II C T4 (suitable for converter operation, 5-50Hz)

RF 410.2-280e, ...-570e	▲
RF 410.2-900e	▲
RF 410.2-1450e	▲



Stroke frequency adjustment, electrical

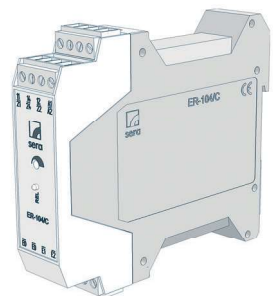
Frequency converter (Series INVEOR) mounted on drive motor
Input 4-20 mA

Surcharge (EUR)			
3-phase 400-480V ±10%, 50/60Hz	0,75 kW	RF410.2-280e, ...-570e	▲
3-phase 400-480V ±10%, 50/60Hz	1,5 kW	RF410.2-900e, ...-1450e	▲

90039445 ▲

90042176 ▲

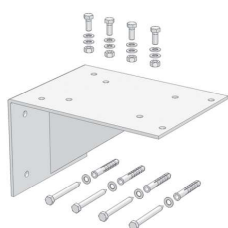
ACCESSORIES



Diaphragm monitoring (evaluation)

Electrode relay for mounting in control cabinet
 (for evaluating the diaphragm rupture electrode MBE-02 (see options))

		Article-No.	Price (EUR)
ER-104	auxiliary power 230 V AC	90022944	▲
ER-104	auxiliary power 24 V DC	90022945	▲
ER-142	auxiliary power 230 V AC II(1)G [Exia] II C	90200363	▲



Bracket

for wall mounting (incl. mounting kit)

	Article-No.	Price (EUR)
PP	90023849	▲
1.4301	90023876	▲



Connection pieces

Extensive range of connection / transition pieces and dosing hoses

Inserts and pipe sockets with union nuts, flange connections, hose screw connections, hose nozzles as well as dosing hoses and accessories.

to be found in **CHAPTER 4** of this catalog, from **page 442**

DIAPHRAGM PUMPS

FITTINGS FOR THE SUCTION SIDE



Foot valve (Plastic)

Properties

- Compact design
- Easy installation
- High-quality materials
- Maintenance-free

Basic version

- Ball: **PTFE**
- Sieve: **ETFE**
- Mesh size: **1mm**

Type	DN	Connection	Material	Seals	Article-No.	Price (EUR)
783.1	20	G 1¼	PP/PP-GFK	EPDM	37600552	▲
783.1	20	G 1¼	PP/PP-GFK	FPM	37600553	▲
783.1	20	G 1¼	PVDF/PVDF-GFK	FEP	30073018	▲



Foot valve (Stainless steel)

Properties

- Compact design
- Easy installation
- High-quality materials
- Maintenance-free

Basic version

- Ball: **1.4401**
- Sieve: **ETFE**
- Mesh size: **1mm**

Type	DN	Connection	Material	Seals	Article-No.	Price (EUR)
RF410.2-280e, ...-570e						
732	15	G 1	1.4571	FEP	37603325	▲
RF410.2-900e, ...-1450e						
733	20	G 1¼	1.4571	FEP	37603962	▲

FITTINGS FOR THE SUCTION SIDE



Multi-function device

Properties

- Can be used as an priming aid and/or an calibration pot
- Compact design
- Flexible Connection
- Maintenance-free
- incl. glue joint (PVC-U) and welding joint (PP)

Basic version

- Housing: **PVC-U / PVC-transparent**
- Seals: **FPM or EPDM**
- max. operating pressure: **-0,5 ... +2 bar**

Type	DN	Connetion	Volume	Seals	Article-No.	Price (EUR)
RF410.2-280e, ...-570e						
MFD 570	15	G1	2 Ltr.	EPDM	37606278	▲
MFD 570	15	G1	2 Ltr.	FPM	37605992	▲
RF410.2-900e, ...-1450e						
MFD 1500	20	G1 ¼	5 Ltr.	EPDM	37606316	▲
MFD 1500	20	G1 ¼	5 Ltr.	FPM	37606315	▲

ACCESSORIES



Hand vacuum pump	PVC/FPM	37605682	▲
(incl. 1,5m PVC-Hose d=12/21)			

DIAPHRAGM PUMPS

FITTINGS FOR THE SUCTION SIDE



Suction lance SLP-15x.1 (with level switch, 1- or 2-stage)

Properties

- Compact, robust design
- Easy handling
- 1- or 2-stage level monitoring
- Protective tube
- Maintenance free
- High quality materials
- Protection class IP65

Basic version

- Suction lance: **PVC-U**
- Foot valve: **PVC-U**
- Valve ball: **PTFE**
- Seals: **EPDM** or **FPM**
- Level switch: **PP**
1- or 2-stage, normally closed (NC)
cable gland: **M12x1,5**
- max. flow rate: **700 l/h**

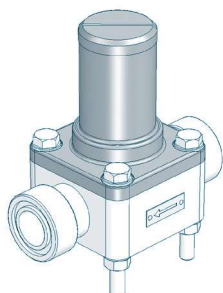
Type	Level switch	Length	Material	Seals	Article-No.	Price (EUR)
RF410.2-280e, ...570e						
SLP-151.1		750 mm	PVC-U	EPDM	37604108	▲
SLP-151.1		750 mm	PVC-U	FPM	37604114	▲
SLP-151.1		1.000 mm	PVC-U	EPDM	37604109	▲
SLP-151.1		1.000 mm	PVC-U	FPM	37604115	▲
SLP-151.1		1.250 mm	PVC-U	EPDM	37604110	▲
SLP-151.1		1.250 mm	PVC-U	FPM	37604116	▲
SLP-152.1		750 mm	PVC-U	EPDM	37604111	▲
SLP-152.1		750 mm	PVC-U	FPM	37604117	▲
SLP-152.1		1.000 mm	PVC-U	EPDM	37604112	▲
SLP-152.1		1.000 mm	PVC-U	FPM	37604118	▲
SLP-152.1		1.250 mm	PVC-U	EPDM	37604113	▲
SLP-152.1		1.250 mm	PVC-U	FPM	37604119	▲

ACCESSORIES

Type	Designation	Article-No.	Price (EUR)
BCS 70x6 Di=50	Container screw connection for internal thread. Ventilation via tolerance of the inner diameter of the adapter or via separate ventilation of the container.	90028923	▲
G2 IBC	For IBC cover with G2 internal thread. Ventilation via adapter. Gas-tight design with „hose set“ possible.	90044282	▲
G2 universal	Bulkhead fitting with flat gasket (made of PVC-U). Ventilation via adapter. Gas-tight design with „hose set“ possible.	90044277	▲
Hose set	G3/4, d12, L=3m for gas tight container screwing for connection to On-site evacuation system	90044369	▲
Quiver	Quiver for storing/holding the suction lance (e.g. when changing containers)	90028919	▲
Control cable	Control cable for level input Cable socket M12x1, 3-pole, 5m length, loosely delivered	90031245	▲



FITTINGS FOR THE PRESSURE SIDE



Diaphragm relief valve

for overpressure protection

Properties

- Compact design
- Easy installation
- Maintenance-free
- High-quality materials

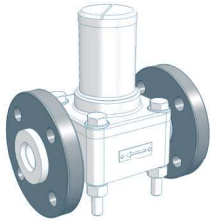
Basic version

- Valve body: **PVC-U, 1.4581, PP** or **PVDF**
- Diaphragm: **PTFE-faced**

Type	Nominal size	Connection	Valve body	Seals	Article-No.	Price (EUR)
RF410.2-280e, ...-570e						
622.10	DN15	G 1	PVC-U	FPM	37604006	▲
622.10	DN15	G 1	PVC-U	EPDM	37603635	▲
622.10	DN15	G 1	PP	FPM	Ⓞ	Ⓞ
622.10	DN15	G 1	PP	EPDM	Ⓞ	Ⓞ
622.10	DN15	G 1	PP-GFK	FPM	37603634	▲
622.10	DN15	G 1	PP-GFK	EPDM	37600450	▲
622.10	DN15	G 1	PVDF	FEP	37600717	▲
622.10	DN15	G 1	PVDF-GFK	FEP	37601819	▲
622.10	DN15	G 1	1.4581	FEP	37600695	▲
RF410.2-900e						
623.10	DN20	G 1¼	PVC-U	FPM	37600009	▲
623.10	DN20	G 1¼	PVC-U	EPDM	36230101	▲
623.10	DN20	G 1¼	PP	FPM	37600016	▲
623.10	DN20	G 1¼	PP	EPDM	36230105	▲
623.10	DN20	G 1¼	PVDF	FEP	37606304	▲
RF410.2-1450e						
624.10	DN25	G 1½	PVC-U	FPM	37603639	▲
624.10	DN25	G 1½	PVC-U	EPDM	37603638	▲
624.10	DN25	G 1½	PP	FPM	37603637	▲
624.10	DN25	G 1½	PP	EPDM	37603636	▲
624.10	DN25	G 1½	PVDF	FEP	37603866	▲

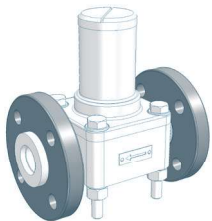
DIAPHRAGM PUMPS

FITTINGS FOR THE PRESSURE SIDE

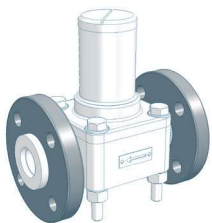


OPTIONS

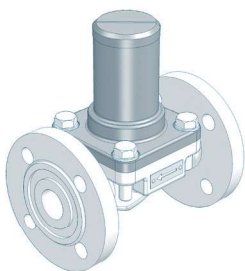
Type	Design	Loose flange	Surcharge [EUR]
622.10	PVC	Loose flange made of PVC-U	▲
622.10	PP-FRP/PVDF-FRP	Loose flange made of PP with steel inlay	⊗
622.10	PP	Loose flange made of PP with steel inlay	▲
622.10	PVDF	Loose flange made of PP with steel inlay	▲



Type	Design	Loose flange	Surcharge [EUR]
623.10	PVC	Loose flange made of PVC-U	▲
623.10	PP-FRP/PVDF-FRP	Loose flange made of PP with steel inlay	×
623.10	PP	Loose flange made of PP with steel inlay	▲
623.10	PVDF	Loose flange made of PP with steel inlay	▲



Type	Design	Loose flange	Surcharge [EUR]
624.10	PVC	Loose flange made of PVC-U	▲
624.10	PP-FRP/PVDF-FRP	Loose flange made of PP with steel inlay	×
624.10	PP	Loose flange made of PP with steel inlay	▲
624.10	PVDF	Loose flange made of PP with steel inlay	▲



Diaphragm relief valve (with fixed flanges)

for overpressure protection

Properties

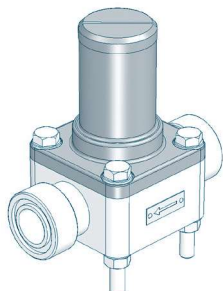
- Compact design
- Easy installation
- Maintenance-free
- High-quality materials

Basic design

- Flanges acc. to **DIN 2501**
- Valve body: **1.4581** or **GG**
- Diaphragm: **PTFE-faced**

Type	Nominal size	Connection	Valve body	Article-No.	Price (EUR)
RF410.2-900e					
623.10	DN20	DIN 2501	1.4581	36230104	▲
623.10	DN20	DIN 2501	GG	37600038	▲
RF410.2-1450e					
624.10	DN25	DIN 2501	1.4581	36240104	▲
624.10	DN25	DIN 2501	GG	37600039	▲

FITTINGS FOR THE PRESSURE SIDE



Diaphragm pressure keeping valve

to prevent over-conveyance

Properties

- Compact design
- Easy installation
- Maintenance-free
- High-quality materials

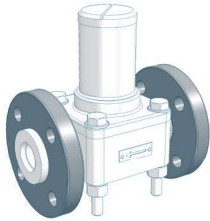
Basic version

- Valve body: **PVC-U, 1.4581, PP** or **PVDF**
- Diaphragm: **PTFE-faced**

Type	Nominal size	Connection	Valve body	Seals	Article-No.	Price (EUR)
RF410.2-280e, ...-570e						
622.D	DN15	G 1	PVC-U	FPM	37600049	▲
622.D	DN15	G 1	PVC-U	EPDM	36221101	▲
622.D	DN15	G 1	PP	FPM	Ⓞ	Ⓞ
622.D	DN15	G 1	PP	EPDM	Ⓞ	Ⓞ
622.D	DN15	G 1	PP-GFK	FPM	37600056	▲
622.D	DN15	G 1	PP-GFK	EPDM	36221105	▲
622.D	DN15	G 1	PVDF	FEP	37602881	▲
622.D	DN15	G 1	PVDF-GFK	FEP	37601449	▲
622.D	DN15	G 1	1.4581	FEP	37600538	▲
RF410.2-900e						
623.D	DN20	G 1¼	PVC-U	FPM	37600050	▲
623.D	DN20	G 1¼	PVC-U	EPDM	36231101	▲
623.D	DN20	G 1¼	PP	FPM	37600057	▲
623.D	DN20	G 1¼	PP	EPDM	36231105	▲
623.D	DN20	G 1¼	PVDF	FEP	37606309	▲
RF410.2-1450e						
624.D	DN25	G 1½	PVC-U	FPM	37600051	▲
624.D	DN25	G 1½	PVC-U	EPDM	36241101	▲
624.D	DN25	G 1½	PP	FPM	37600058	▲
624.D	DN25	G 1½	PP	EPDM	36241105	▲
624.D	DN25	G 1½	PVDF	FEP	37606310	▲

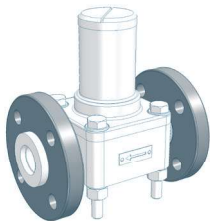
DIAPHRAGM PUMPS

FITTINGS FOR THE PRESSURE SIDE

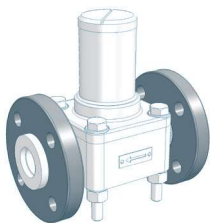


OPTIONS

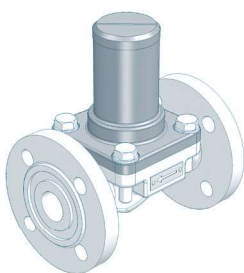
Type	Design	Loose flange	Surcharge [EUR]
622.D	PVC	Loose flange made of PVC-U	▲
622.D	PP-FRP/PVDF-FRP	Loose flange made of PP with steel inlay	⊗
622.D	PP	Loose flange made of PP with steel inlay	▲
622.D	PVDF	Loose flange made of PP with steel inlay	▲



Type	Design	Loose flange	Surcharge [EUR]
623.D	PVC	Loose flange made of PVC-U	▲
623.D	PP-FRP/PVDF-FRP	Loose flange made of PP with steel inlay	×
623.D	PP	Loose flange made of PP with steel inlay	▲
623.D	PVDF	Loose flange made of PP with steel inlay	▲



Type	Design	Loose flange	Surcharge [EUR]
624.D	PVC	Loose flange made of PVC-U	▲
624.D	PP-FRP/PVDF-FRP	Loose flange made of PP with steel inlay	×
624.D	PP	Loose flange made of PP with steel inlay	▲
624.D	PVDF	Loose flange made of PP with steel inlay	▲



Diaphragm pressure keeping valve (with fixed flanges)

to prevent over-conveyance

Properties

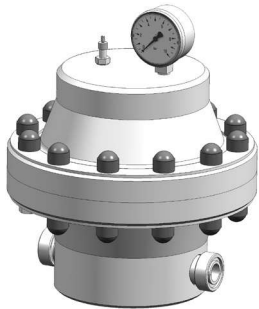
- Compact design
- Easy installation
- Maintenance-free
- High-quality materials

Basic design

- Flanges acc. to **DIN 2501**
- Valve body: **1.4581** or **GG**
- Diaphragm: **PTFE-faced**

Type	Nominal size	Connection	Valve body	Article-No.	Price (EUR)
RF410.2-900e					
623.D	DN20	DIN 2501	1.4581	36231104	▲
623.D	DN20	DIN 2501	GG	37600080	▲
RF410.2-1450e					
624.D	DN25	DIN 2501	1.4581	36241104	▲
624.D	DN25	DIN 2501	GG	37600081	▲

FITTINGS FOR THE PRESSURE SIDE



Diaphragm pulsation damper (Plastic, with elastomere diaphragm, max. 10 bar)

Properties

- Any mounting position
- Easy installation
- Long service life
- Easy handling
- High-quality materials
- Low maintenance

Type	Connection	max. Pressure	Housing	Diaphragm Seals	Article-No.	Price (EUR)
713.1	G 1 ¼	10 bar	PVC-U	EPDM	30071038	▲
713.1	G 1 ¼	10 bar	PVC-U	FPM	30071039	▲
713.1	G 1 ¼	10 bar	PP	EPDM	30071040	▲
713.1	G 1 ¼	10 bar	PP	FPM	30071041	▲
713.1	G 1 ¼	10 bar	PVDF	EPDM	30071060	▲
713.1	G 1 ¼	10 bar	PVDF	FPM	30071061	▲

OPTIONS



Loose-type flanges	Design acc. to DIN 2501, incl. O-Rings		
PVC-design	Loose flange, PVC-U	DN20	▲
PP-/PVDF-design	Loose flange, PP with steel insert	DN20	▲

ACCESSORIES



Bracket			
	PP	90010913	▲
for wall mounting	1.4301	90010914	▲
	Steel (color treated)	90010915	▲



Filling device			
with manometer, max. 7 bar incl. 2m hose and coupling for air valve	90009396		▲
	Steel (color treated)		

DIAPHRAGM PUMPS

FITTINGS FOR THE PRESSURE SIDE



Diaphragm pulsation damper (Stainless steel, max. 10 bar)

Properties

- Any mounting position
- Easy installation
- Long service life
- Easy handling
- High-quality materials
- Low maintenance

Type	Connection	max.Pressure	Material	Diaphragm	Article-No.	Price (EUR)
RF410.2-280e						
810.1-0,75/10	G ½	10 bar	1.4571	Butyl	37603722	▲
810.1-0,75/10	G ½	10 bar	1.4571	FPM	37603726	▲
810.1-0,75/10	G ½	10 bar	1.4571	PTFE	37606307	▲
RF410.2-570e, ...-900e						
810.1-2,0/10	G ¾	10 bar	1.4571	Butyl	37603723	▲
810.1-2,0/10	G ¾	10 bar	1.4571	FPM	37603727	▲
810.1-2,0/10	G ¾	10 bar	1.4571	PTFE	37606308	▲
RF410.2-1450e						
Ⓞ					Ⓞ	Ⓞ

ACCESSORIES



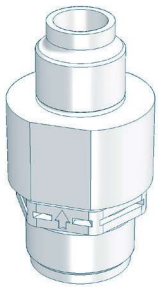
Filling- and pressure measuring device

(mounted on pulsation damper)

Design: Plastic	Manometer: 0-16 bar Measuring system: copper alloyed	●
Design: Stainless steel	Manometer: 0-16 bar, glycerine-damped Measuring system: copper alloyed Housing: 1.4301	▲
Filling pump FLP 2	for filling device	
with manometer, max. 7 bar incl. 2m hose and coupling for air valve	90009396	▲



FITTINGS FOR THE PRESSURE SIDE



Dosing valve (Plastic)

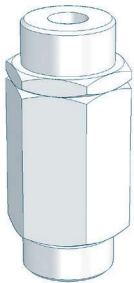
Properties

- Compact design
- Any mounting position
- Maintenance-free
- High-quality materials

Basic version

- Valve ball: **PTFE**
- Spring: **Hastelloy C4**

Type	DN	Inlet	Outlet	Material	Seal	Article-No.	Price (EUR)
693.1	20	G 1 ¼	R 1 ¼	PP-GFK	EPDM	37604661	▲
693.1	20	G 1 ¼	R 1 ¼	PP-GFK	FPM	37603317	▲
693.1	20	G 1 ¼	R 1 ¼	PVDF-GFK	FEP	30072027	▲



Dosing valve (Stainless steel)

Properties

- Compact design
- Any mounting position
- Maintenance-free
- High-quality materials

Basic version

- Valve ball: **1.4401**
- Seals: **FEP-covered**
- Spring: **Hastelloy C4**

Type	DN	Inlet	Outlet	Material	Seal	Article-No.	Price (EUR)
RF410.2-280e, ...-570e							
692.1	15	G 1	R 1	1.4571	FEP	37600669	▲
RF410.2-900e, ...-1450e							
693.1	20	G 1 ¼	R 1 ¼	1.4571	FEP	37600789	▲



Injection fitting

Properties

- incl. injection lance for better mixing
- Easy installation
- Any mounting position
- Maintenance-free
- High-quality materials

Basic version

- Cone-type check valve (spring loaded)
- Shut-off ball valve
- Injection lance (L=150mm)
- max. operating pressure: 10 bar

Type	DN	Inlet	Outlet	Material	Seals	Article-No.	Price (EUR)
RF410.2-280e, ...-570e							
8062.1	15	G 1	R ¾	PVC-U	EPDM	37602110	▲
8062.1	15	G 1	R ¾	PVC-U	FPM	37602111	▲
8062.1	15	G 1	R ¾	PP	EPDM	37602112	▲
8062.1	15	G 1	R ¾	PP	FPM	37602113	▲
8062.1	15	G 1	R ¾	PVDF	FPM	37602114	▲
RF410.2-900e, ...-1450e							
8063.1	20	G 1 ¼	R 1	PVC-U	EPDM	37602115	▲
8063.1	20	G 1 ¼	R 1	PVC-U	FPM	37602116	▲
8063.1	20	G 1 ¼	R 1	PP	EPDM	37602117	▲
8063.1	20	G 1 ¼	R 1	PP	FPM	37602118	▲
8063.1	20	G 1 ¼	R 1	PVDF	FPM	37602119	▲