

DIAPHRAGM PUMPS

CONTROLLABLE



OVERVIEW

- High dosing accuracy
- Safe to run dry
- Leakage free
- Low-maintenance
- User-friendly
- Flexible, multifunctional
- PROFIBUS DP-Interface
- Digital and analogue control options
- Manual stroke length- and stroke frequency adjustment
- Robust, metallic housing

TECHNICAL DATA

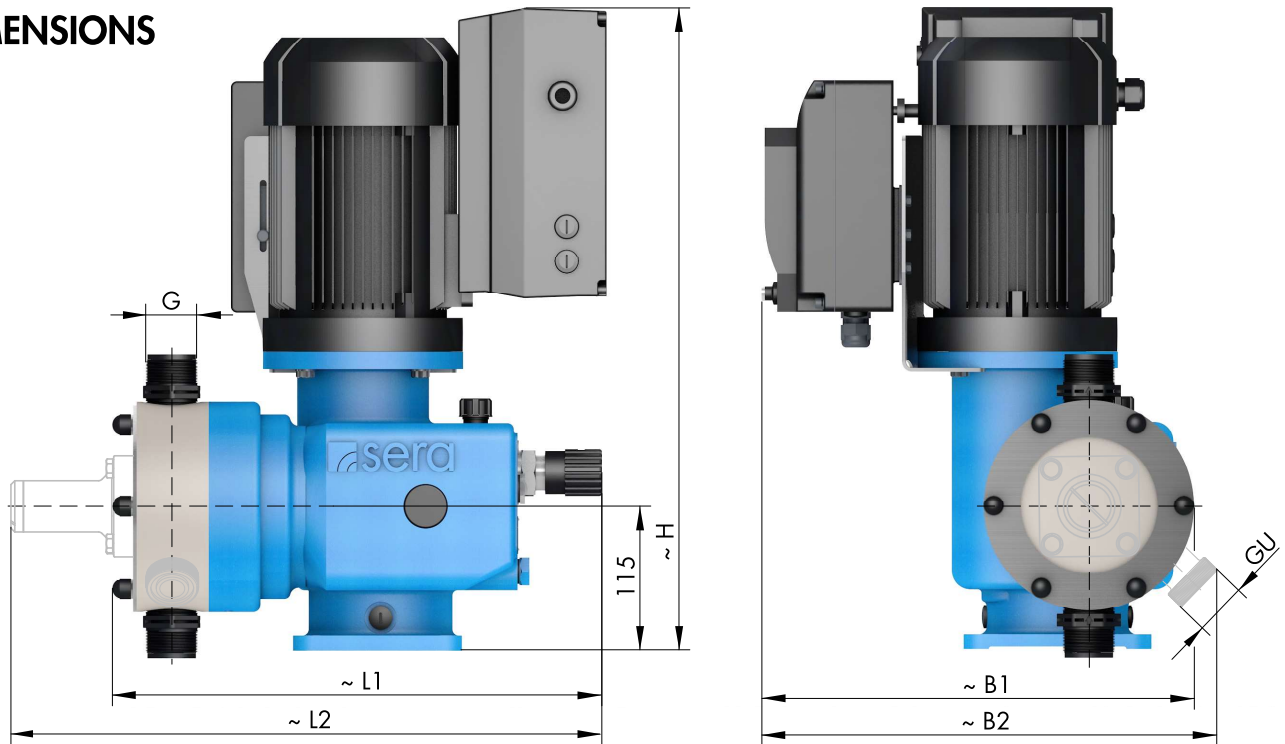
PUMP DATA			C 410.2-...			
			280e	570e	900e	1450e
Permissible pressure $p_{2max.}$ at the pump outlet	bar		8	6	5	5
Nominal capacity QN at $p_{2max.}$	l/h	50/60 Hz	0-280	0-570	0-900	0-1.450
Quantity per stroke	ml/stroke (100%)		46	98	155	245
Max. suction height	mWC		5	5	3	3
Min./max. permissible pressure at the pump inlet	bar	$p_{1min./max.}$	-0,5/0	-0,5/0	-0,3/0	-0,3/0
Recommended nominal diameter DN of the connecting pipes	mm		15	15	20	25
Nominal stroke frequency	l/min	50 Hz	97	97	97	97
Weight approx.	kg	plastic	38	38	49	49
		stainless steel	45	45	64	64

ELECTRICAL DATA			C 410.2-...			
			280e	570e	900e	1450e
Power consumption	kW		0,75	0,75	1,5	1,5
Voltage	V		380-420			
Frequency	Hz		50/60			
Inlet voltage, control input	V DC		5...30			
Minimum contact signal time	ms		55			
Analogue input resistance	Ω		100			
Digital output internal/external supply			PNP max. 15V DC, 50mA /max. 30V DC, 350mA			
Recommended fuse (circuit breaker)			C10A			
Insulation class	ISO		F			
Enclosure	IP		55			

Flow capacity 280 l/h ... 1.450 l/h
 Admissible counterpressure up to 8 bar

C 410.2

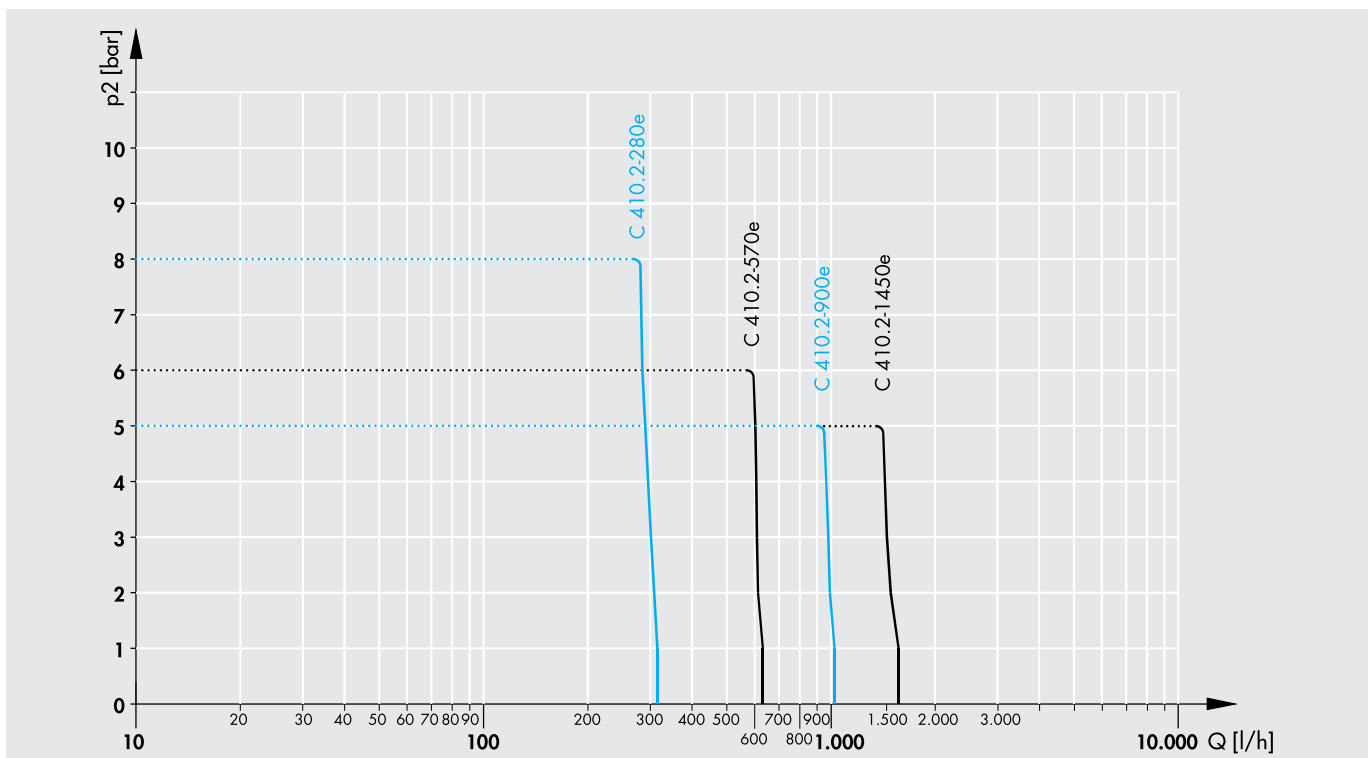
DIMENSIONS



	G	GU		B1	B2	L1	L2	H		B1	B2	L1	L2	H
C 410.2-280e	G1¼*	G1¼*	▶ PVC, PP, PVDF	346	364	403	484	515	▶ 1.457 l	346	372	400	484	515
C 410.2-570e	G1¼*	G1¼*		346	364	403	484	515		346	372	400	484	515
C 410.2-900e	G1¼	×		372	×	428	×	540		372	×	425	×	540
C 410.2-1450e	G1¼	×		372	×	428	×	540		372	×	425	×	540

* PVC = G1

CHARACTERISTIC CURVES



DIAPHRAGM PUMPS

CONTROLLABLE

FUNCTIONS AND OPERATING MODES

- Manual operation
- Manual stroke frequency adjustment
- PROFIBUS DP-VO Slave interface (option)
- External START/STOP
- Pulse operation / fractinator
- Pulse memory
- Analogue operation (0/4 ... 20 mA)*
- Analogue operation standardization
- Batch dosing (manual / with timer)*
- 3 LEDs for status indication
- Speed control/Slow Mode
- Multiline, illuminated display
- Menu-driven parameterization
- Flow indication
- Calibration function
- 4-key operation
- 2 digital outputs (PLC)*
- 1 digital output (PLC or contact signal)*
- 2 analogue/digital inputs (reversible)*
- Programmable input-/output functions*
- Diaphragm monitoring
- Connection/evaluation: 2-stage level monitoring
- Connection/evaluation: Flow monitoring
- Connection/evaluation: Flow metering
- Voltage 3~380 -420V/N/PE, 50/60Hz
- 2m connection cable with CEE-plug, 5-pole

* inapplicable when supplied with PROFIBUS DP - interface (Option)

BASIC DESIGNS

PP

Pump body **PP**
 Valves **PP-FRP**
 Valve balls **PTFE**
 Diaphragm **PTFE-faced**

Type	Valve seals			
	EPDM Article-No.	Price (EUR)	FPM Article-No.	Price (EUR)
C410.2-280e	16022724	Ⓞ	16012455	Ⓞ
C410.2-570e	16022405	Ⓞ	16022218	Ⓞ
C410.2-900e	16022638	Ⓞ	16022685	Ⓞ
C410.2-1450e	16022276	Ⓞ	16022498	Ⓞ

PVDF

Pump body **PVDF**
 Valves **PVDF-FRP**
 Valve balls **PTFE**
 Diaphragm **PTFE-faced**

Type	Valve seals	
	FEP-covered Article-No.	Price (EUR)
C410.2-280e	16023757	Ⓞ
C410.2-570e	16023758	Ⓞ
C410.2-900e	16023759	Ⓞ
C410.2-1450e	16023760	Ⓞ

PVC-U

Pump body **PVC-U**
 Valves **PVC-U**
 Valve balls **PTFE**
 Diaphragm **PTFE-faced**

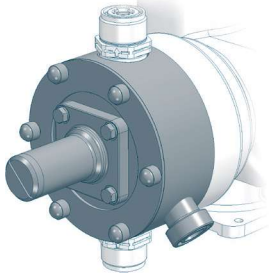
Type	Valve seals			
	EPDM Article-No.	Price (EUR)	FPM Article-No.	Price (EUR)
C410.2-280e	16022607	Ⓞ	16023010	Ⓞ
C410.2-570e	16022852	Ⓞ	16022273	Ⓞ
C410.2-900e	16022650	Ⓞ	16022562	Ⓞ
C410.2-1450e	16022649	Ⓞ	16022526	Ⓞ

STAINLESS STEEL

Pump body **1.4571**
 Valves **1.4571/1.4581**
 Valve balls **1.4401**
 Diaphragm **PTFE-faced**

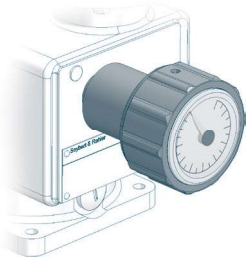
Type	Valve seals	
	FEP-covered Article-No.	Price (EUR)
C410.2-280e	16023761	Ⓞ
C410.2-570e	16023056	Ⓞ
C410.2-900e	16023662	Ⓞ
C410.2-1450e	16023762	Ⓞ

OPTIONS



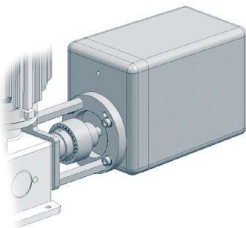
Integrated relief valve

Diaphragm: PTFE-faced Connecting seals: EPDM or FPM		Surcharge (EUR)
PP	...410.2-280e, ...-570e	▲
PVC	...410.2-280e, ...-570e	▲
PVDF	...410.2-280e, ...-570e	Ⓞ
1.4571	...410.2-280e, ...-570e	▲
PP, PVDF, PVC-U, 1.4571	...410.2-900e, ...-1450e	×
Connecting seals FEP-covered all types		▲



Stroke length adjustment

		Surcharge (EUR)
with position indicator	...410.2-280e, -570e, 900e	▲
	...410.2-1450e	▲



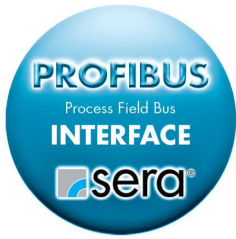
Stroke length adjustment with actuator

		Surcharge (EUR)
Actuator N1S	230V, 50/60Hz, 128s/10 U, 15Nm Potentiometer 1 kΩ (incl. mounting set)	▲
Electronic positioning controller ESR-N (only integrated in N1S)	Input signal 0/4 - 20mA including feedback signal 0/4 - 20mA	▲

DIAPHRAGM PUMPS

CONTROLLABLE

OPTIONS

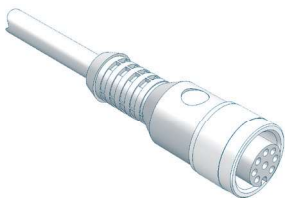


PROFIBUS

- PROFIBUS DP-V0 (Slave)
- Transmission speed: automatic 9,6 kbit/s ... 12 Mbit/s
- Connection to dosing pump: M12 cable socket, 5-pole, B-coded
- not in combination with cTÜVus

PROFIBUS	Article-No.	Price (EUR)
PROFIBUS DP-V0 (Slave) Interface		▲
Accessories		
PROFIBUS Y - distributor, M12x1, 5-pole, IP67	90025526	▲
PROFIBUS T - distributor, M12x1, 5-pole, IP67	90022889	▲
PROFIBUS Cable plug M12x1, straight, individually convertible, 5-pole, IP67	90025520	▲
PROFIBUS Cable socket M12x1, straight, individually convertible, 5-pole, IP67	90025521	▲
PROFIBUS Cable socket M12x1, straight, with 10m line, 2x0,34mm ² , 1x free cable end, color: purple, IP67	90025524	▲
PROFIBUS Cable socket M12x1, straight, with 15m line, 2x0,34mm ² , 1x free cable end color: purple, IP67	90025525	▲
PROFIBUS Connection M12x1, straight, with cable plug and cable socket, 2x0,34mm ² , length 1m, cable 2x0,34mm ² , color: purple, IP67	90025674	▲
PROFIBUS Bus line 2x 0,64mm ² , shielded, Permanent installation inside, color: purple (serial meter)	90014541	▲
PROFIBUS Terminating resistor M12x1, 5-polig, IP67	90022890	▲

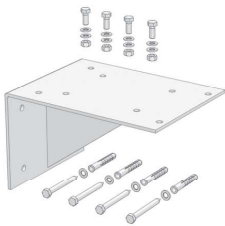
ACCESSORIES



Control cable

	Article-No.	Price (EUR)
for controlling the pump		
Cable socket M12, 8-pole fully assembled, incl. 5m cable	90031247	▲
Cable socket M12, 8-pole individually convertible (without cable)	90022879	▲
for level input (level monitoring not included)		
Cable socket M12, 3-pole fully assembled, inkl. 5m cable	90031245	▲
Cable socket M12, 3-pole individually convertible (without cable)	90022877	▲

ACCESSORIES



Bracket

for wall mounting (incl. mounting kit)

Article-No. **Price (EUR)**

PP

90023849



1.4301

90023876



Connection pieces

Extensive range of connection / transition pieces and dosing hoses

Inserts and pipe sockets with union nuts, flange connections, hose screw connections, hose nozzles as well as dosing hoses and accessories.

to be found in **CHAPTER 4** of this catalog, from **page 442**

FITTINGS FOR THE SUCTION SIDE



Multi-function device

Properties

- Can be used as an priming aid and/or an calibration pot
- Compact design
- Flexible Connection
- Maintenance-free
- incl. glue joint (PVC-U) and welding joint (PP)

Basic version

- Housing: **PVC-U / PVC-transparent**
- Seals: **FPM** or **EPDM**
- max. operating pressure: **-0,5 ... +2 bar**

Type	DN	Connetion	Volume	Seals	Article-No.	Price (EUR)
C410.2-280e, ...-570e						
MFD 570	15	G1	2 Ltr.	EPDM	37606278	▲
MFD 570	15	G1	2 Ltr.	FPM	37605992	▲
C410.2-900e, ...-1450e						
MFD 1500	20	G1¼	5 Ltr.	EPDM	37606316	▲
MFD 1500	20	G1¼	5 Ltr.	FPM	37606315	▲

ACCESSORIES



Hand vacuum pump

PVC/FPM

37605682

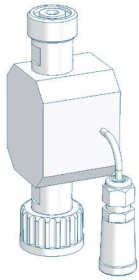


(incl. 1,5m PVC-Hose d=12/21)

DIAPHRAGM PUMPS

CONTROLLABLE

FITTINGS FOR THE SUCTION SIDE



Flow meter

- IP65
- incl. 0,6m cable with cable socket M12, 5-pole (socket for pump connection)
- max. permissible operating pressure: **10 bar**
- can be used on suction and pressure side

Type	Connection thread	Materials	Article-No.	Price (EUR)
C410.2-280e				
8015.1	Inlet: G1¼ (internal) Outlet: G1¼ (external)	PVC-U/FPM	37602320	▲
		PVDF/FPM	37602332	▲
C410.2-570e				
8016.1	Inlet: G1¼ (internal) Outlet: G1¼ (external)	PVC-U/FPM	37602322	▲
		PVDF/FPM	Ⓞ	Ⓞ
C410.2-900e, ...-1450e				
8017.1	Inlet: G1¼ (internal) Outlet: G1¼ (external)	PVC-U/FPM	37602323	▲
		PVDF/FPM	37602335	▲
C410.2-280e ... C410.2-1450e				
Seals		EPDM		○



Foot valve (Plastic)

Properties

- Compact design
- Easy installation
- High-quality materials
- Maintenance-free

Basic version

- Ball: **PTFE**
- Sieve: **ETFE**
- Mesh size: **1mm**

Type	DN	Connection	Material	Seals	Article-No.	Price (EUR)
783.1	20	G 1¼	PP/PP-GFK	EPDM	37600552	▲
783.1	20	G 1¼	PP/PP-GFK	FPM	37600553	▲
783.1	20	G 1¼	PVDF/PVDF-GFK	FEP	30073018	▲



Foot valve (Stainless steel)

Properties

- Compact design
- Easy installation
- High-quality materials
- Maintenance-free

Basic version

- Ball: **1.4401**
- Sieve: **ETFE**
- Mesh size: **1mm**

Type	DN	Connection	Material	Seals	Article-No.	Price (EUR)
C410.2-280e, ...-570e						
732	15	G 1	1.4571	FEP	37603325	▲
C410.2-900e, ...-1450e						
733	20	G 1¼	1.4571	FEP	37603962	▲

FITTINGS FOR THE SUCTION SIDE



Suction lance SLP-15x.1 (with level switch, 1- or 2-stage)

Properties







- Compact, robust design
- Easy handling
- 1- or 2-stage level monitoring
- Protective tube
- Maintenance free
- High quality materials
- Protection class IP65

Basic version

- Suction lance: **PVC-U**
- Foot valve: **PVC-U**
- Valve ball: **PTFE**
- Seals: **EPDM** or **FPM**
- Level switch: **PP**
1- or 2-stage, normally closed (NC)
cable gland: **M12x1,5**
- max. flow rate: **700 l/h**

Type	Level switch	Length	Material	Seals	Article-No.	Price (EUR)
C410.2-280e, ...-570e						
SLP-151.1	1-stage	750 mm	PVC-U	EPDM	37604108	▲
SLP-151.1	1-stage	750 mm	PVC-U	FPM	37604114	▲
SLP-151.1	1-stage	1.000 mm	PVC-U	EPDM	37604109	▲
SLP-151.1	1-stage	1.000 mm	PVC-U	FPM	37604115	▲
SLP-151.1	1-stage	1.250 mm	PVC-U	EPDM	37604110	▲
SLP-151.1	1-stage	1.250 mm	PVC-U	FPM	37604116	▲
SLP-152.1	2-stage	750 mm	PVC-U	EPDM	37604111	▲
SLP-152.1	2-stage	750 mm	PVC-U	FPM	37604117	▲
SLP-152.1	2-stage	1.000 mm	PVC-U	EPDM	37604112	▲
SLP-152.1	2-stage	1.000 mm	PVC-U	FPM	37604118	▲
SLP-152.1	2-stage	1.250 mm	PVC-U	EPDM	37604113	▲
SLP-152.1	2-stage	1.250 mm	PVC-U	FPM	37604119	▲

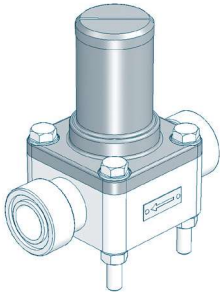
ACCESSORIES

Type	Designation	Article-No.	Price (EUR)
	BCS 70x6 Di=50 Container screw connection for internal thread. Ventilation via tolerance of the inner diameter of the adapter or via separate ventilation of the container.	90028923	▲
	G2 IBC For IBC cover with G2 internal thread. Ventilation via adapter. Gas-tight design with „hose set“ possible.	90044282	▲
	G2 universal Bulkhead fitting with flat gasket (made of PVC-U). Ventilation via adapter. Gas-tight design with „hose set“ possible.	90044277	▲
	Hose set G3/4, d12, L=3m for gas tight container screwing for connection to On-site evacuation system	90044369	▲
	Quiver Quiver for storing/holding the suction lance (e.g. when changing containers)	90028919	▲
	Control cable Control cable for level input Cable socket M12x1, 3-pole, 5m length, loosely delivered	90031245	▲

DIAPHRAGM PUMPS

CONTROLLABLE

FITTINGS FOR THE PRESSURE SIDE



Diaphragm relief valve

for overpressure protection

Properties

- Compact design
- Easy installation
- Maintenance-free
- High-quality materials

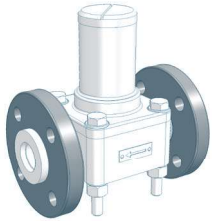
Basic version

- Valve body: **PVC-U, 1.4581, PP or PVDF**
- Diaphragm: **PTFE-faced**

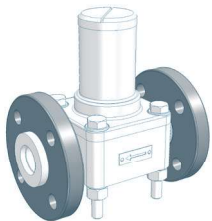
Type	Nominal size	Connection	Valve body	Seals	Article-No.	Price (EUR)
C410.2-280e, ...-570e						
622.10	DN15	G 1	PVC-U	FPM	37604006	▲
622.10	DN15	G 1	PVC-U	EPDM	37603635	▲
622.10	DN15	G 1	PP	FPM	Ⓞ	Ⓞ
622.10	DN15	G 1	PP	EPDM	Ⓞ	Ⓞ
622.10	DN15	G 1	PP-GFK	FPM	37603634	▲
622.10	DN15	G 1	PP-GFK	EPDM	37600450	▲
622.10	DN15	G 1	PVDF	FEP	37600717	▲
622.10	DN15	G 1	PVDF-GFK	FEP	37601819	▲
622.10	DN15	G 1	1.4581	FEP	37600695	▲
C410.2-900e						
623.10	DN20	G 1¼	PVC-U	FPM	37600009	▲
623.10	DN20	G 1¼	PVC-U	EPDM	36230101	▲
623.10	DN20	G 1¼	PP	FPM	37600016	▲
623.10	DN20	G 1¼	PP	EPDM	36230105	▲
623.10	DN20	G 1¼	PVDF	FEP	37606304	▲
C410.2-1450e						
624.10	DN25	G 1½	PVC-U	FPM	37603639	▲
624.10	DN25	G 1½	PVC-U	EPDM	37603638	▲
624.10	DN25	G 1½	PP	FPM	37603637	▲
624.10	DN25	G 1½	PP	EPDM	37603636	▲
624.10	DN25	G 1½	PVDF	FEP	37603866	▲

FITTINGS FOR THE PRESSURE SIDE

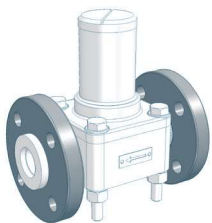
OPTIONS



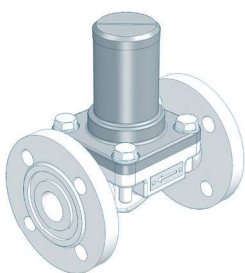
Type	Design	Loose flange	Surcharge [EUR]
622.10	PVC	Loose flange made of PVC-U	▲
622.10	PP-FRP/PVDF-FRP	Loose flange made of PP with steel inlay	⊗
622.10	PP	Loose flange made of PP with steel inlay	▲
622.10	PVDF	Loose flange made of PP with steel inlay	▲



Type	Design	Loose flange	Surcharge [EUR]
623.10	PVC	Loose flange made of PVC-U	▲
623.10	PP-FRP/PVDF-FRP	Loose flange made of PP with steel inlay	×
623.10	PP	Loose flange made of PP with steel inlay	▲
623.10	PVDF	Loose flange made of PP with steel inlay	▲



Type	Design	Loose flange	Surcharge [EUR]
624.10	PVC	Loose flange made of PVC-U	▲
624.10	PP-FRP/PVDF-FRP	Loose flange made of PP with steel inlay	×
624.10	PP	Loose flange made of PP with steel inlay	▲
624.10	PVDF	Loose flange made of PP with steel inlay	▲



Diaphragm relief valve (with fixed flanges)

for overpressure protection

Properties

- Compact design
- Easy installation
- Maintenance-free
- High-quality materials

Basic design

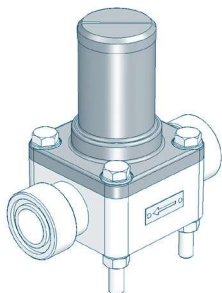
- Flanges acc. to **DIN 2501**
- Valve body: **1.4581** or **GG**
- Diaphragm: **PTFE-faced**

Type	Nominal size	Connection	Valve body	Article-No.	Price (EUR)
C410.2-900e					
623.10	DN20	DIN 2501	1.4581	36230104	▲
623.10	DN20	DIN 2501	GG	37600038	▲
C410.2-1450e					
624.10	DN25	DIN 2501	1.4581	36240104	▲
624.10	DN25	DIN 2501	GG	37600039	▲

DIAPHRAGM PUMPS

CONTROLLABLE

FITTINGS FOR THE PRESSURE SIDE



Diaphragm pressure keeping valve

to prevent over-conveyance

Properties

- Compact design
- Easy installation
- Maintenance-free
- High-quality materials

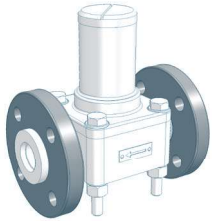
Basic version

- Valve body: **PVC-U, 1.4581, PP or PVDF**
- Diaphragm: **PTFE-faced**

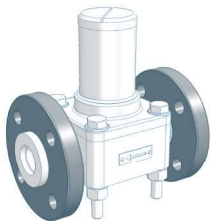
Type	Nominal size	Connection	Valve body	Seals	Article-No.	Price (EUR)
C410.2-280e, ...-570e						
622.D	DN15	G 1	PVC-U	FPM	37600049	▲
622.D	DN15	G 1	PVC-U	EPDM	36221101	▲
622.D	DN15	G 1	PP	FPM	Ⓞ	Ⓞ
622.D	DN15	G 1	PP	EPDM	Ⓞ	Ⓞ
622.D	DN15	G 1	PP-GFK	FPM	37600056	▲
622.D	DN15	G 1	PP-GFK	EPDM	36221105	▲
622.D	DN15	G 1	PVDF	FEP	37602881	▲
622.D	DN15	G 1	PVDF-GFK	FEP	37601449	▲
622.D	DN15	G 1	1.4581	FEP	37600538	▲
C410.2-900e						
623.D	DN20	G 1¼	PVC-U	FPM	37600050	▲
623.D	DN20	G 1¼	PVC-U	EPDM	36231101	▲
623.D	DN20	G 1¼	PP	FPM	37600057	▲
623.D	DN20	G 1¼	PP	EPDM	36231105	▲
623.D	DN20	G 1¼	PVDF	FEP	37606309	▲
C410.2-1450e						
624.D	DN25	G 1½	PVC-U	FPM	37600051	▲
624.D	DN25	G 1½	PVC-U	EPDM	36241101	▲
624.D	DN25	G 1½	PP	FPM	37600058	▲
624.D	DN25	G 1½	PP	EPDM	36241105	▲
624.D	DN25	G 1½	PVDF	FEP	37606310	▲

FITTINGS FOR THE PRESSURE SIDE

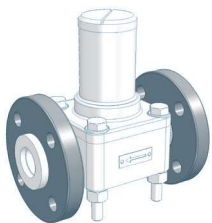
OPTIONS



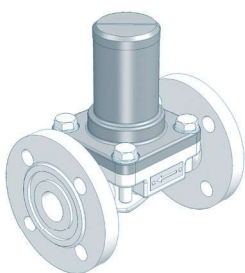
Type	Design	Loose flange	Surcharge [EUR]
622.D	PVC	Loose flange made of PVC-U	▲
622.D	PP-FRP/PVDF-FRP	Loose flange made of PP with steel inlay	⊗
622.D	PP	Loose flange made of PP with steel inlay	▲
622.D	PVDF	Loose flange made of PP with steel inlay	▲



Type	Design	Loose flange	Surcharge [EUR]
623.D	PVC	Loose flange made of PVC-U	▲
623.D	PP-FRP/PVDF-FRP	Loose flange made of PP with steel inlay	×
623.D	PP	Loose flange made of PP with steel inlay	▲
623.D	PVDF	Loose flange made of PP with steel inlay	▲



Type	Design	Loose flange	Surcharge [EUR]
624.D	PVC	Loose flange made of PVC-U	▲
624.D	PP-FRP/PVDF-FRP	Loose flange made of PP with steel inlay	×
624.D	PP	Loose flange made of PP with steel inlay	▲
624.D	PVDF	Loose flange made of PP with steel inlay	▲



Diaphragm pressure keeping valve (with fixed flanges)

to prevent over-conveyance

Properties

- Compact design
- Easy installation
- Maintenance-free
- High-quality materials

Basic design

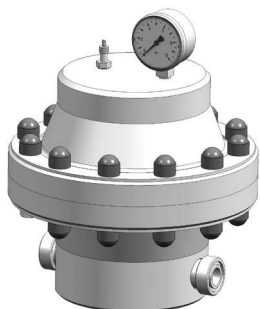
- Flanges acc. to **DIN 2501**
- Valve body: **1.4581** or **GG**
- Diaphragm: **PTFE-faced**

Type	Nominal size	Connection	Valve body	Article-No.	Price (EUR)
C410.2-900e					
623.D	DN20	DIN 2501	1.4581	36231104	▲
623.D	DN20	DIN 2501	GG	37600080	▲
C410.2-1450e					
624.D	DN25	DIN 2501	1.4581	36241104	▲
624.D	DN25	DIN 2501	GG	37600081	▲

DIAPHRAGM PUMPS

CONTROLLABLE

FITTINGS FOR THE PRESSURE SIDE



Diaphragm pulsation damper (Plastic, with elastomere diaphragm, max. 10 bar)

Properties

- Any mounting position
- Easy installation
- Long service life
- Easy handling
- High-quality materials
- Low maintenance

Type	Connection	max. Pressure	Housing	Diaphragm		Article-No.	Price (EUR)
				Seals			
713.1	G 1 ¼	10 bar	PVC-U	EPDM		30071038	▲
713.1	G 1 ¼	10 bar	PVC-U	FPM		30071039	▲
713.1	G 1 ¼	10 bar	PP	EPDM		30071040	▲
713.1	G 1 ¼	10 bar	PP	FPM		30071041	▲
713.1	G 1 ¼	10 bar	PVDF	EPDM		30071060	▲
713.1	G 1 ¼	10 bar	PVDF	FPM		30071061	▲

OPTIONS



Loose-type flanges

Design acc. to DIN 2501, incl. O-Rings

PVC-design	Loose flange, PVC-U	DN20	▲
PP-/PVDF-design	Loose flange, PP with steel insert	DN20	▲

ACCESSORIES



Bracket for wall mounting	PP	90010913	▲
	1.4301	90010914	▲
	Steel (color treated)	90010915	▲



Filling pump FLP 2	for filling device		
with manometer, max. 7 bar incl. 2m hose and coupling for air valve		90009396	▲

FITTINGS FOR THE PRESSURE SIDE



Diaphragm pulsation damper (Stainless steel, max. 10 bar)

Properties

- Any mounting position
- Easy installation
- Long service life
- Easy handling
- High-quality materials
- Low maintenance

Type	Connection	max.Pressure	Material	Diaphragm	Article-No.	Price (EUR)
C410.2-280e						
810.1-0,75/10	G ½	10 bar	1.4571	Butyl	37603722	▲
810.1-0,75/10	G ½	10 bar	1.4571	FPM	37603726	▲
810.1-0,75/10	G ½	10 bar	1.4571	PTFE	37606307	▲
C410.2-570e, ...-900e, ...-1450e						
810.1-2,0/10	G ¾	10 bar	1.4571	Butyl	37603723	▲
810.1-2,0/10	G ¾	10 bar	1.4571	FPM	37603727	▲
810.1-2,0/10	G ¾	10 bar	1.4571	PTFE	37606308	▲

ACCESSORIES



Filling- and pressure measuring device

(mounted on pulsation damper)

Design: Plastic	Manometer: 0-16 bar Measuring system: copper alloyed	●
Design: Stainless steel	Manometer: 0-16 bar, glycerine-damped Measuring system: copper alloyed Housing: 1.4301	▲



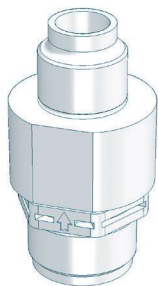
Filling pump FLP 2 for filling device

with manometer, max. 7 bar incl. 2m hose and coupling for air valve	90009396	▲
---	----------	---

DIAPHRAGM PUMPS

CONTROLLABLE

FITTINGS FOR THE PRESSURE SIDE



Dosing valve (Plastic)

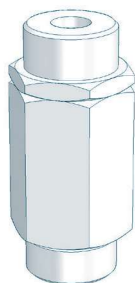
Properties

- Compact design
- Any mounting position
- Maintenance-free
- High-quality materials

Basic version

- Valve ball: **PTFE**
- Spring: **Hastelloy C4**

Type	DN	Inlet	Outlet	Material	Seal	Article-No.	Price (EUR)
693.1	20	G 1 ¼	R 1 ¼	PP-GFK	EPDM	37604661	▲
693.1	20	G 1 ¼	R 1 ¼	PP-GFK	FPM	37603317	▲
693.1	20	G 1 ¼	R 1 ¼	PVDF-GFK	FEP	30072027	▲



Dosing valve (Stainless steel)

Properties

- Compact design
- Any mounting position
- Maintenance-free
- High-quality materials

Basic version

- Valve ball: **1.4401**
- Seals: **FEP-covered**
- Spring: **Hastelloy C4**

Type	DN	Inlet	Outlet	Material	Seal	Article-No.	Price (EUR)
C410.2-280e, ...-570e							
692.1	15	G 1	R 1	1.4571	FEP	37600669	▲
C410.2-900e, ...-1450e							
693.1	20	G 1 ¼	R 1 ¼	1.4571	FEP	37600789	▲

FITTINGS FOR THE PRESSURE SIDE



Injection fitting

Properties

- incl. injection lance for better mixing
- Easy installation
- Any mounting position
- Maintenance-free
- High-quality materials

Basic version

- Cone-type check valve (spring loaded)
- Shut-off ball valve
- Injection lance (L=150mm)
- max. operating pressure: 10 bar

Type	DN	Inlet	Outlet	Material	Seals	Article-No.	Price (EUR)
C410.2-280e, ...-570e							
8062.1	15	G 1	R ¾	PVC-U	EPDM	37602110	▲
8062.1	15	G 1	R ¾	PVC-U	FPM	37602111	▲
8062.1	15	G 1	R ¾	PP	EPDM	37602112	▲
8062.1	15	G 1	R ¾	PP	FPM	37602113	▲
8062.1	15	G 1	R ¾	PVDF	FPM	37602114	▲
C410.2-900e, ...-1450e							
8063.1	20	G 1¼	R 1	PVC-U	EPDM	37602115	▲
8063.1	20	G 1¼	R 1	PVC-U	FPM	37602116	▲
8063.1	20	G 1¼	R 1	PP	EPDM	37602117	▲
8063.1	20	G 1¼	R 1	PP	FPM	37602118	▲
8063.1	20	G 1¼	R 1	PVDF	FPM	37602119	▲