

DIAPHRAGM PUMPS

CONTROLLABLE



OVERVIEW

- High dosing accuracy
- Safe to run dry
- Leakage free
- Low-maintenance
- User-friendly
- Flexible, multifunctional
- PROFIBUS DP-Interface
- Digital and analogue control options
- Manual stroke length- and stroke frequency adjustment
- Robust, metallic housing



24 h DELIVERY

TECHNICAL DATA

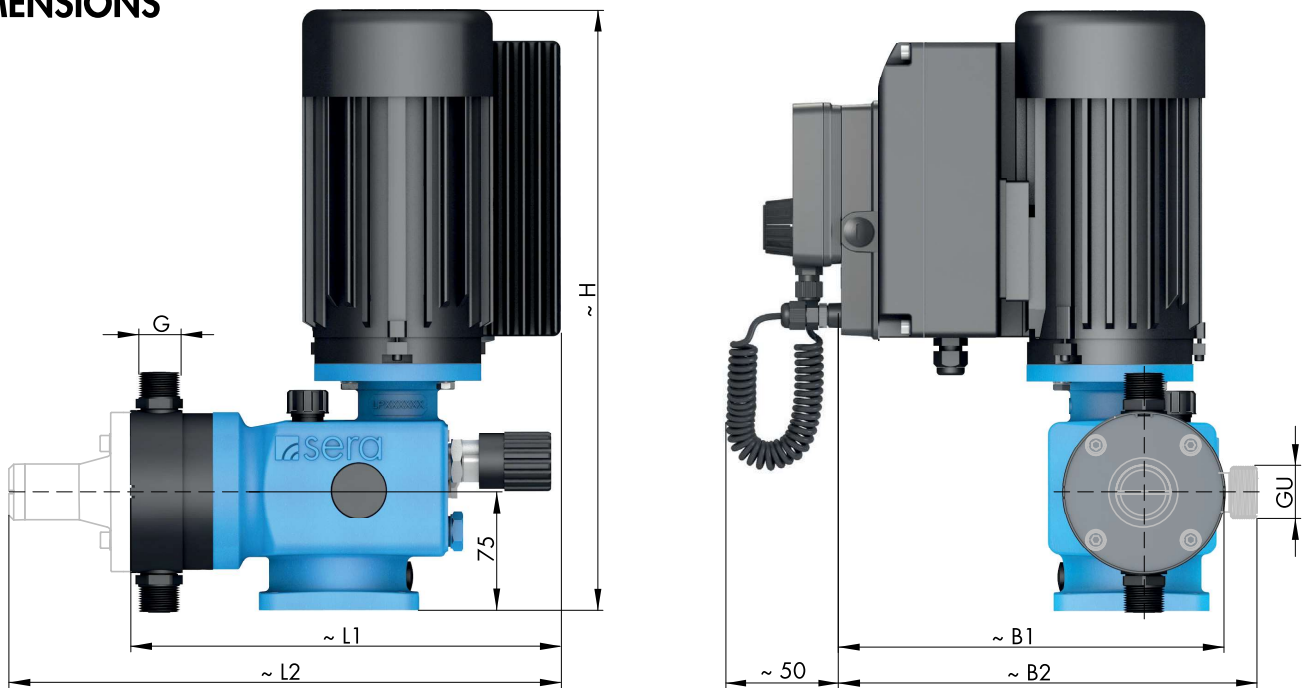
PUMP DATA			C 409.2-... Pro+					
			1,6e	2,4e	7,0e	12e	18e	25e
Permissible pressure p_{2max} at the pump outlet	bar		10	10	10	10	10	10
Nominal capacity QN at p_{2max}	l/h	50/60 Hz	0-1,6	0-2,4	0-7	0-12	0-18	0-25
Quantity per stroke	ml/stroke (100%)		0,27	0,27	0,78	3,0	3,0	3,0
Max. suction height	mWC		3					
Min./max. permissible pressure at the pump inlet	bar	$p_{1min/max}$	-0,3/0					
Recomm. nominal diameter DN of the connecting pipes	mm		10	10	10	10	10	10
Nominal stroke frequency	1/min	50/60 Hz	100	150	150	67	100	150
Weight approx.	kg	plastic	11	11	11	11	11	8,5
		stainless st.						

ELECTRICAL DATA			C 409.2-1,6e Pro+ ... C 409.2-25e Pro+	
			230 V, 50/60 Hz	115 V, 50/60 Hz
Power consumption	kW		0,18	
Voltage	V		210 - 250	100 - 125
Frequency	Hz		50/60	
Inlet voltage, control input	V DC		5...30	
Minimum contact signal time	ms		55	
Analogue input resistance	Ω		39	
Digital output internal/external supply			PNP max. 24V DC, 30mA /max. 30V DC, 30mA	
Recommended fuse (circuit breaker)			C6A	C10A
Insulation class	ISO		F	
Enclosure	IP		55	

Flow capacity 1,6 l/h ... 25 l/h
 Admissible counterpressure up to 10 bar

C 409.2 Pro+

DIMENSIONS



	G	GU		B1	B2	L1	L2	H		B1	B2	L1	L2	H
C 409.2-1,6e	G 3/4	G 3/4	PVC, PP, PVDF	261	X		X	380	1.4571		X		X	380
C 409.2-2,4e	G 3/4	G 3/4		261	X		X	380		261	X		X	380
C 409.2-7,0e	G 3/4	G 3/4		261	X		X	380		261	X		X	380
C 409.2-12e	G 3/4	G 3/4		261		250		380		261		250		380
C 409.2-18e	G 3/4	G 3/4		261		270		342		261		270		380
C 409.2-25e	G 3/4	G 3/4		261	261	270	329	342		261	266	268	329	342

CHARACTERISTIC CURVES

COMING SOON

DIAPHRAGM PUMPS

CONTROLLABLE

FUNCTIONS AND OPERATING MODES

- Manual operation
- Manual stroke frequency adjustment
- PROFIBUS DP-VO Slave interface (option)
- External START/STOP
- Pulse operation / fractinator
- Pulse memory
- Analogue operation (0/4 ... 20 mA)
- Analogue operation standardization
- Batch dosing (manual / with timer)
- 3 LEDs for status indication
- Multiline, illuminated display
- Menu-driven parameterization
- Flow indication
- Calibration function
- 4-key operation
- 2 digital outputs (PLC)
- 1 analogue output (PLC or contact signal)
- 2 analogue/digital inputs (reversible)
- 1 digital input
- Programmable input-/output functions
- Diaphragm monitoring
- Connection/evaluation: 2-stage level monitoring
- Connection/evaluation: Flow monitoring
- Connection/evaluation: Flow metering
- Voltage 210-250V, 50/60Hz
- 3m connection cable with Euro-plug

BASIC DESIGNS

PP-FRP



Pump body **PP-FRP**
 Valves **PP-FRP**
 Valve balls **PTFE**
 Diaphragm **PTFE-faced**

* with manual venting valve
 (Seal: **EPDM** or **FPM**)

Type	Valve seals			
	EPDM Article-No.	Price (EUR)	FPM Article-No.	Price (EUR)
C409.2-1,6e Pro+ *	15006426	Ⓞ	15006241	Ⓞ
C409.2-2,4e Pro+ *	15006427	Ⓞ	15006239	Ⓞ
C409.2-7,0e Pro+	15006428	Ⓞ	15006175	Ⓞ
C409.2-12e Pro+	15006415	Ⓞ	15006234	Ⓞ
C409.2-18e Pro+	15006362	Ⓞ	15006236	Ⓞ
C409.2-25e Pro+	16024200	Ⓞ	15005801	Ⓞ

PVDF-FRP

Pump body **PVDF-FRP** ** with manual venting valve
 Valves **PVDF-FRP** (Seal: **FFKM**)
 Valve balls **PTFE**
 Diaphragm **PTFE-faced**

Type	Valve seals	
	FEP-covered Article-No.	Price (EUR)
C409.2-1,6e Pro+ **	×	×
C409.2-2,4e Pro+ **	×	×
C409.2-7,0e Pro+	Ⓞ	Ⓞ
C409.2-12e Pro+	Ⓞ	Ⓞ
C409.2-18e Pro+	Ⓞ	Ⓞ
C409.2-25e Pro+	16024394	Ⓞ

PVC-U



Pump body **PVC-U**
 Valves **PVC-U**
 Valve balls **PTFE**
 Diaphragm **PTFE-faced** (* **EPDM**)

Type	Valve seals			
	EPDM Article-No.	Price (EUR)	FPM Article-No.	Price (EUR)
C409.2-1,6e Pro+	15006435	Ⓞ	15006436	Ⓞ
C409.2-2,4e Pro+	15006437	Ⓞ	15006438	Ⓞ
C409.2-7,0e Pro+	15006434	Ⓞ	15006433	Ⓞ
C409.2-12e Pro+	15006431	Ⓞ	15006432	Ⓞ
C409.2-18e Pro+	15006430	Ⓞ	15006317	Ⓞ
C409.2-25e Pro+	15005985	Ⓞ	15005988	Ⓞ

STAINLESS STEEL

Pump body **1.4571**
 Valves **1.4571**
 Valve balls **1.4401**
 Diaphragm **PTFE-faced** (* **EPDM**)

Type	Valve seals	
	FEP-covered Article-No.	Price (EUR)
C409.2-1,6e Pro+	Ⓞ	Ⓞ
C409.2-2,4e Pro+	Ⓞ	Ⓞ
C409.2-7,0e Pro+	Ⓞ	Ⓞ
C409.2-12e Pro+	Ⓞ	Ⓞ
C409.2-18e Pro+	Ⓞ	Ⓞ
C409.2-25e Pro+	16024419	Ⓞ

OPTIONS

Versions (basic equipment)

Version **Price (EUR)**



Pump **without** control element (price reduction)



Pump **with** control element (basic version)

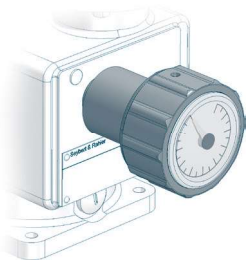


Pump **without** control element; **with** INTERFACE MODULE
 (INTERFACE MODULE instead of control element)



Stroke length adjustment

Surcharge (EUR)

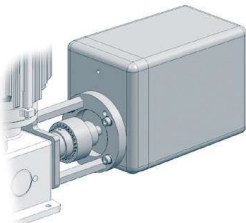


with position indicator



Stroke length adjustment with actuator

Surcharge (EUR)



C409.2-1,6e ...-2,4e

Actuator



C409.2-7,0e ... C409.2-25e

Actuator N C1-BA

230V ±10%, 50/60Hz, 128s/10 U, 1,5Nm
 incl. mounting set



Electronic positioning controller ESR-N
 (only integrated in N C1-BA)

Input signal 0/4 - 20mA including
 feedback signal 0/4 - 20mA

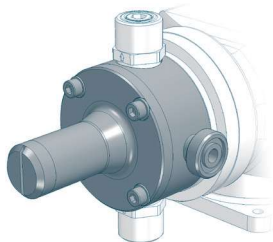


in combination with cTÜVus

DIAPHRAGM PUMPS



CONTROLLABLE

OPTIONS



Integrated relief valve

Diaphragm: **PTFE-faced** Connecting seals: **EPDM** or **FPM** **Surcharge (EUR)**

PP		C409.2-1,6e, ...-2,4e	×
		C409.2-4,0e, ...-7,0e, ...-12e, ...-18e, ...-25e	▲
PVDF		C409.2-1,6e, ...-2,4e	×
		C409.2-4,0e, ...-7,0e, ...-12e, ...-18e, ...-25e	⊙
PVC-U		C409.2-1,6e, ...-2,4e	×
		C409.2-4,0e, ...-7,0e, ...-12e, ...-18e, ...-25e	▲
1.4571		C409.2-1,6e, ...-2,4e	×
		C409.2-4,0e, ...-7,0e, ...-12e, ...-18e, ...-25e	▲

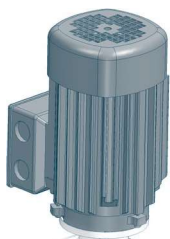
Connecting seals **FEP-covered**

for connection G 3/4 C409.2...e ▲

Drive motor

Surcharge (EUR)

Connection voltage 115V, 50/60Hz ⊙



Special connection

Surcharge (EUR)

Special connection (plug) for power supply ⊙

in combination with cTÜVus ×



ACCESSORIES



Control element

Article-No. **Price (EUR)**

Control element (removeable) 90044844 ▲

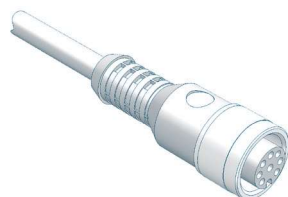
Control cable

Article-No. **Price (EUR)**

for level input (flow monitoring not included)

Cable plug M12, 8-pole fully assembled, incl. 5m cable 90042494 ▲

Cable plug M12, 8-pole Individually convertible (without cable) 90022885 ▲





INTERFACE MODULE - PROFINET -

- PROFINET INTERFACE MODULE
- PROFINET IO RT 2 Port (Ethernet Network Interface)
- Transmission speed: automatic 10Mbit/s, 100Mbit/s
- Connection to dosing pump: M12 cable socket, 4-pole, D-coded

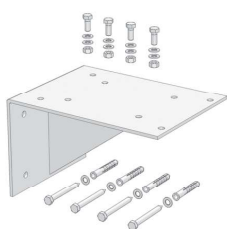
Type	Article-No.	Price (EUR)
PROFINET INTERFACE MODULE	90044877	▲
PROFINET connection	length 1m	90050133 ▲
	length 5m	90050134 ▲
	length 10m	90050135 ▲
PROFINET Connection	length 1m	90050136 ▲
	length 5m	90050137 ▲
	length 10m	90050138 ▲



INTERFACE MODULE - PROFIBUS -

- PROFIBUS INTERFACE MODULE
- PROFIBUS DP-V1 (Slave)
- Transmission speed: automatic 9,6 kbit/s ... 12 Mbit/s
- Connection to dosing pump: M12 cable socket, 5-pole, B-coded

Type	Article-No.	Price (EUR)
PROFIBUS INTERFACE MODULE	90044875	▲
PROFIBUS cable plug M12x1, straight, individually convertible, 5-pole, IP67	90025520	▲
PROFIBUS Cable socket M12x1, straight, individually convertible, 5-pole, IP67	90025521	▲
PROFIBUS Cable socket M12x1, straight, with 10m line, 2x0,34mm ² , 1x free cable end, color: purple, IP67	90025524	▲
PROFIBUS Cable socket M12x1, straight, with 15m line, 2x0,34mm ² , 1x free cable end, color: purple, IP67	90025525	▲
PROFIBUS Connection M12x1, straight, with cable plug and cable socket, 2x0,34mm ² , length 1m, cable 2x0,34mm ² , color: purple, IP67	90025674	▲
PROFIBUS Bus line 2x 0,64mm ² , shielded, Permanent installation (inside), color: purple (serial meter)	90014541	▲
PROFIBUS Terminating resistor M12x1, 5-pole, IP67	90022890	▲



Bracket

	Article-No.	Price (EUR)
for wall mounting (incl. mounting kit)		
PP	90023848	▲
1.4301	90023875	▲

DIAPHRAGM PUMPS

CONTROLLABLE

FITTINGS FOR THE SUCTION SIDE



Multi-function device

Properties

- Can be used as an priming aid and/or an calibration pot
- Compact design
- Flexible Connection
- Maintenance-free
- incl. glue joint (PVC-U) and welding joint (PP)

Basic version

- Housing: **PVC-U / PVC-transparent**
- Seals: **FPM or EPDM**
- max. operating pressure: **-0,5 ... +2 bar**

Type	DN	Connetion	Volume	Seals	Article-No.	Price (EUR)
MFD 60	8	G $\frac{3}{4}$	0,5 Ltr.	EPDM	37606311	▲
MFD 60	8	G $\frac{3}{4}$	0,5 Ltr.	FPM	37605864	▲



ACCESSORIES

Hand vacuum pump	PVC/FPM	37605682	▲
-------------------------	---------	----------	---

(incl. 1,5m PVC-Hose d=12/21)



Suction lance S-01 (without level switch)

Properties

- Compact, robust design
- Maintenance-free
- Easy handling
- High-quality materials
- individual special lengths up to max. 1.500mm possible

Basic version

- Suction lance: **PVC-U**
- Foot valve: **PVC-U**
- Seals: **EPDM or FPM**
- Valve ball: **PTFE**
- max. flow rate: **200 l/h**
- Standard length: **650mm, 1.000mm und 1.250mm**

Type	Length	Connection	Seals	Article-No.	Price (EUR)
S-01	650 mm	G $\frac{3}{4}$	EPDM	37606591	▲
S-01	1.000 mm	G $\frac{3}{4}$	EPDM	37606592	▲
S-01	1.250 mm	G $\frac{3}{4}$	EPDM	37606593	▲
S-01	max. 1.500 mm	G $\frac{3}{4}$	EPDM	37600705	▲
S-01	650 mm	G $\frac{3}{4}$	FPM	37606594	▲
S-01	1.000 mm	G $\frac{3}{4}$	FPM	37606595	▲
S-01	1.250 mm	G $\frac{3}{4}$	FPM	37606596	▲
S-01	max. 1.500 mm	G $\frac{3}{4}$	FPM	37600817	▲

FITTINGS FOR THE SUCTION SIDE



Suction lance SL-12.1 (with level switch, 2-stage with plug, 8-pole)

Properties

- Compact design
- Height-adjustable
- 2-stage level monitoring
- Flexible connection
- Easy handling
- High-quality materials
- Maintenance-free
- incl. hose connection
4/6, 6/8, 6/12

Basic version

- Suction lance: **PVC-U**
- Foot valve: **PVC-U**
- Valve ball: **PTFE**
- Hose (inboard): **PE**
- Level switch: **PP**
2-stage, normally closed (NC)
5m cable (from foot valve) with plug, M12, 8-pole
- max. flow rate: **14 l/h (4/6) ... 35 l/h (6/12)**

Type	Length	Seals	Article-No.	Price (EUR)
SL-12.1	600 mm	PTFE	37606194	▲
SL-12.1	1.000 mm	PTFE	37606495	▲
SL-12.1	1.200 mm	PTFE	37606195	▲



Foot valve (Plastic)

Properties

- Compact design
- Easy installation
- High-quality materials
- Maintenance-free

Basic version

- Ball: **PTFE**
- Sieve: **ETFE**
- Mesh size: **1mm**

Type	DN	Connection	Material	Seals	Article-No.	Price (EUR)
781.1	8	G 3/4	PVDF/PVDF-GFK	FEP	30073008	▲



Foot valve (plastic)

Properties

- Compact design
- Easy installation
- High-quality materials
- Maintenance-free

Basic version

- Ball: **PTFE**
- Sieve: **ETFE**
- Mesh size: **1mm**

Type	DN	Connection	Material	Seals	Article-No.	Price (EUR)
731	8	G 3/4	PVC-U	EPDM	37601636	▲



Foot valve (Stainless steel)

Properties

- Compact design
- Easy installation
- High-quality materials
- Maintenance-free

Basic version

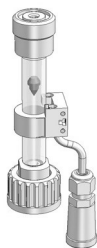
- Ball: **1.4401**
- Sieve: **ETFE**
- Mesh size: **1mm**

Type	DN	Connection	Material	Seals	Article-No.	Price (EUR)
731	8	G 3/4	1.4571	FEP	37601149	▲

DIAPHRAGM PUMPS

CONTROLLABLE

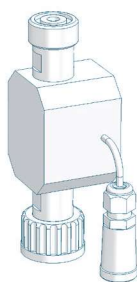
FITTINGS FOR THE PRESSURE SIDE



Flow controller

- IP65
- incl. 0,6m cable with cable socket M12, 5-pole (socket for pump connection)
- max. permissible operating pressure: **10 bar**

Type	Connection thread	Materials	Article-No.	Price (EUR)
C409.2-1,6e, ...-2,4e, ...-7,0e, ...-12e				
8191.1	Inlet: G $\frac{3}{4}$ (internal) Outlet: G $\frac{3}{4}$ (external)	PVC-U/FPM	37602227	▲
		PP/FPM	37602175	▲
C409.2-18e, ...-25e				
8192.1	Inlet: G $\frac{3}{4}$ (internal) Outlet: G $\frac{3}{4}$ (external)	PVC-U/FPM	37602176	▲
		PP/FPM	37602177	▲

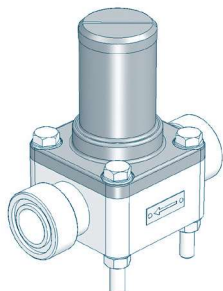


Flow meter

- IP65
- incl. 0,6m cable with cable socket M12, 5-pole (socket for pump connection)
- max. permissible operating pressure: **10 bar**
- can be used on suction and pressure side

Type	Connection thread	Materials	Article-No.	Price (EUR)
8012.1	Inlet: G $\frac{3}{4}$ (internal) Outlet: G $\frac{3}{4}$ (external)	PVC-U/FPM	37602277	▲
		PVDF/FPM	37602307	▲
Seals		EPDM		○

FITTINGS FOR THE PRESSURE SIDE



Diaphragm relief valve

for overpressure protection

Properties

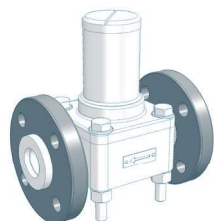
- Compact design
- Easy installation
- Maintenance-free
- High-quality materials

Basic version

- Valve body: **PVC-U, 1.4581, PP** or **PVDF**
- Diaphragm: **PTFE-faced**

Type	Nominal size	Connection	Valve body	Seals	Article-No.	Price (EUR)
620.10	DN8	G 3/4	PVC-U	FPM	37603632	▲
620.10	DN8	G 3/4	PVC-U	EPDM	36200101	▲
620.10	DN8	G 3/4	PP	FPM	37603630	▲
620.10	DN8	G 3/4	PP	EPDM	37603629	▲
620.10	DN8	G 3/4	PVDF	FEP	37601792	▲
620.10	DN8	G 3/4	1.4581	FEP	37600670	▲

OPTIONS

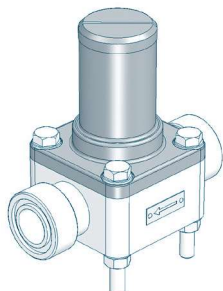


Type	Design	Loose flange	Surcharge [EUR]
620.10	PVC	Loose flange made of PVC-U	Ⓞ
620.10	PP-FRP/PVDF-FRP	Loose flange made of PP with steel inlay	×
620.10	PP	Loose flange made of PP with steel inlay	▲
620.10	PVDF	Loose flange made of PP with steel inlay	▲

DIAPHRAGM PUMPS

CONTROLLABLE

FITTINGS FOR THE PRESSURE SIDE



Diaphragm pressure keeping valve

to prevent over-conveyance

Properties

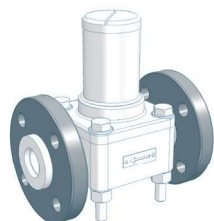
- Compact design
- Easy installation
- Maintenance-free
- High-quality materials

Basic version

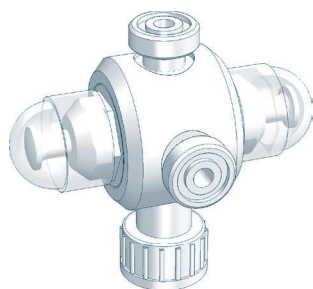
- Valve body: **PVC-U, 1.4581, PP** or **PVDF**
- Diaphragm: **PTFE-faced**

Type	Nominal size	Connection	Valve body	Seals	Article-No.	Price (EUR)
620.D	DN8	G 3/4	PVC-U	FPM	37600048	▲
620.D	DN8	G 3/4	PVC-U	EPDM	36201101	▲
620.D	DN8	G 3/4	PP	FPM	37600055	▲
620.D	DN8	G 3/4	PP	EPDM	36201105	▲
620.D	DN8	G 3/4	PVDF	FEP	37601827	▲
620.D	DN8	G 3/4	1.4581	FEP	37600525	▲

OPTIONS



Type	Design	Loose flange	Surcharge [EUR]
620.D	PVC	Loose flange made of PVC-U	Ⓞ
620.D	PP-FRP/PVDF-FRP	Loose flange made of PP with steel inlay	×
620.D	PP	Loose flange made of PP with steel inlay	▲
620.D	PVDF	Loose flange made of PP with steel inlay	▲



Multi function valve

Properties

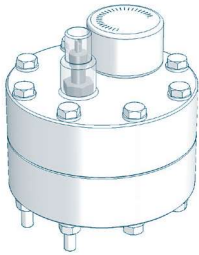
- Maximum operating pressure 10 bar
- Compact design
- Easy installation
- Maintenance-free
- Venting
- Overpressure protection for dosing pumps
- Prevention of over conveyance

Basic version

- Diaphragms: **PTFE-faced**
- Connection: **G3/4**
- **Relief valve side**
Opening pressure: **2 up to 10 bar** (adjustable)
- **Pressure keeping valve side**
Holding pressure: **1,0 - 1,5 bar**

Type	Valve body	Seals	Article-No.	Price (EUR)
MFV 050	PVC-U	EPDM	37600973	▲
MFV 050	PVC-U	FPM	37600974	▲
MFV 050	PVC-U	FEP	37600975	▲
MFV 050	PP	EPDM	37600982	▲
MFV 050	PP	FPM	37600983	▲
MFV 050	PP	FEP	37600984	▲

FITTINGS FOR THE PRESSURE SIDE



Diaphragm pulsation damper (Plastic, PTFE-diaphragm, max. 10 bar)

Properties

- Any mounting position
- Easy installation
- Long service life
- Easy handling
- High-quality materials
- Low maintenance

Type	Connection	max. Pressure	Material	Diaphragm	Article-No.	Price (EUR)
720.1	G ½	10 bar	PVC-U	PTFE	37601848	▲
720.1	G ½	10 bar	PP	PTFE	37601856	▲
720.1	G ½	10 bar	PVDF	PTFE	37601857	▲

ACCESSORIES



Connection adapter

Thread connection	G3/4 male	PVC-U	EPDM	90021733	▲
Connction to pulsation damper	G1/2 male	PVC-U	FPM	90025079	▲
		PP	EPDM	90038083	▲
		PP	FPM	90038082	▲
		PVDF	FEP	☉	☉



Retaining clamp

(2 Piece each pulsation damper)	PP	d 16	90010649	▲
---------------------------------	----	------	----------	---



Filling pump FLP 2 for filling device

with manometer, max. 7 bar incl. 2m hose and coupling for air valve	90009396	▲
---	----------	---

DIAPHRAGM PUMPS

CONTROLLABLE

FITTINGS FOR THE PRESSURE SIDE



Diaphragm pulsation damper (Stainless steel, max. 10 bar)

Properties

- Any mounting position
- Easy installation
- Long service life
- Easy handling
- High-quality materials
- Low maintenance

Type	Connection	max. Pressure	Material	Diaphragm	Article-No.	Price (EUR)
810.1-0,16/10	G ½	10 bar	1.4571	Butyl	37603720	▲
810.1-0,16/10	G ½	10 bar	1.4571	FPM	37603724	▲
810.1-0,16/10	G ½	10 bar	1.4571	PTFE	×	×

ACCESSORIES



Filling- and pressure measuring device

(mounted on pulsation damper)

Design: Plastic	Manometer: 0-16 bar Measuring system: copper alloyed	●
Design: Stainless steel	Manometer: 0-16 bar, glycerine-damped Measuring system: copper alloyed Housing: 1.4301	▲



Filling pump FLP 2 for filling device

with manometer, max. 7 bar incl. 2m hose and coupling for air valve	90009396	▲
---	----------	---



Injection fitting

Properties

- incl. injection lance for better mixing
- Easy installation
- Any mounting position
- Maintenance-free
- High-quality materials

Basic version

- Cone-type check valve (spring loaded)
- Shut-off ball valve
- Injection lance (L=150mm)
- max. operating pressure: 10 bar

Type	DN	Inlet	Outlet	Material	Seals	Article-No.	Price (EUR)
8061.1	10	G ¾	R ½	PVC-U	EPDM	37602105	▲
8061.1	10	G ¾	R ½	PVC-U	FPM	37602106	▲
8061.1	10	G ¾	R ½	PP	EPDM	37602107	▲
8061.1	10	G ¾	R ½	PP	FPM	37602108	▲
8061.1	10	G ¾	R ½	PVDF	FPM	37602109	▲

FITTINGS FOR THE PRESSURE SIDE



Dosing valve (Plastic)

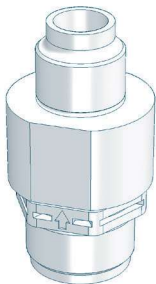
Properties

- Compact design
- Any mounting position
- Maintenance-free
- High-quality materials

Basic version

- integrated injection lance
- Valve ball: **PTFE**
- Seals: **EPDM** or **FPM**
- Spring: **Hastelloy C4**

Type	DN	Inlet	Outlet	Material	Seal	Article-No.	Price (EUR)
691.2	8	G 3/4	R 1/2	PVC-U	EPDM	37606318	▲
691.2	8	G 3/4	R 1/2	PVC-U	FPM	37605769	▲
691.2	8	G 3/4	R 1/2	PP-GFK	EPDM	37605768	▲
691.2	8	G 3/4	R 1/2	PP-GFK	FPM	37606317	▲



Dosing valve (Plastic)

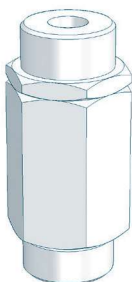
Properties

- Compact design
- Any mounting position
- Maintenance-free
- High-quality materials

Basic version

- Valve ball: **PTFE**
- Spring: **Hastelloy C4**

Type	DN	Inlet	Outlet	Material	Seal	Article-No.	Price (EUR)
691.1	8	G 3/4	R 1/2	PVDF/-GFK	FEP	30072015	▲



Dosing valve (Stainless steel)

Properties

- Compact design
- Any mounting position
- Maintenance-free
- High-quality materials

Basic version

- Valve ball: **1.4401**
- Seals: **FEP-covered**
- Spring: **Hastelloy C4**

Type	DN	Inlet	Outlet	Material	Seal	Article-No.	Price (EUR)
691.1	8	G 3/4	R 1/2	1.4571	FEP	37600493	▲