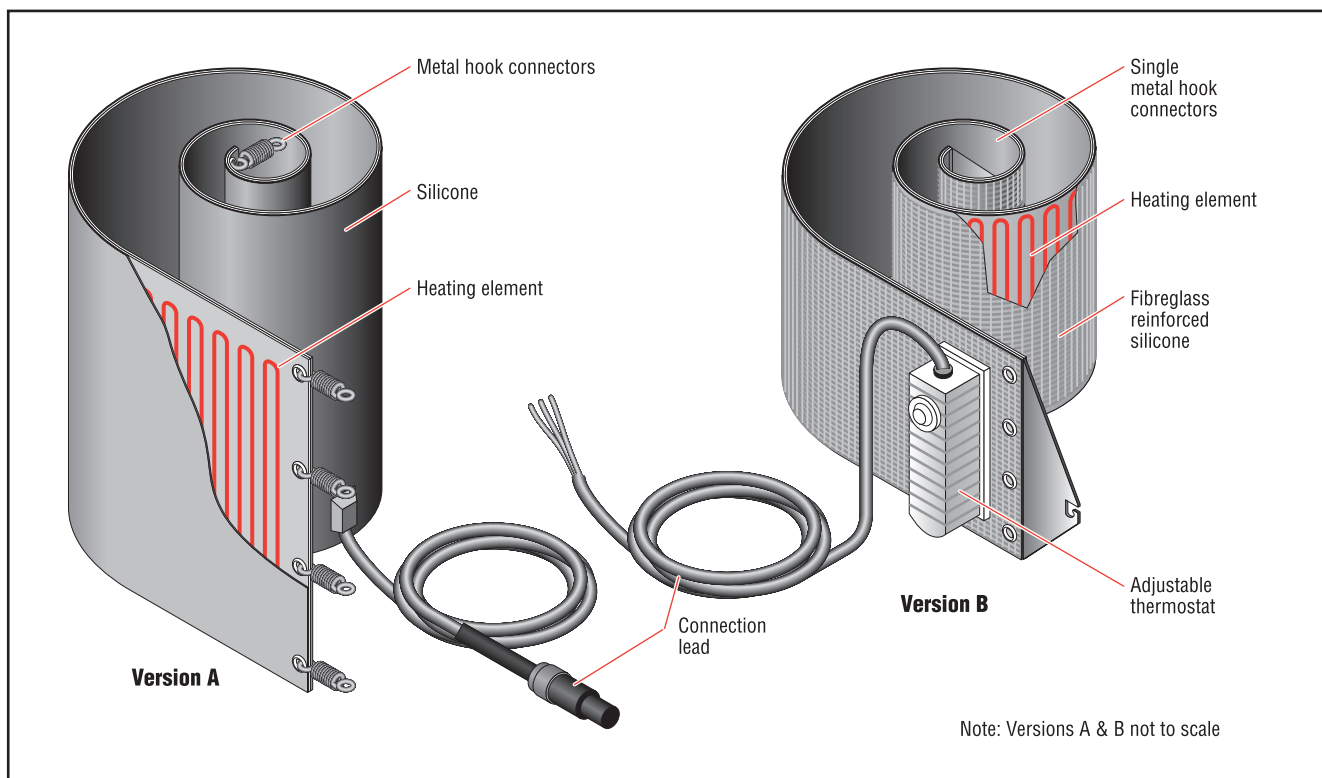


## Silicone drum heating band

Heaters are often used to promote effective processing of high viscosity media or gases in barrels, drums, or gas cylinders. These silicone heating bands are a simple, low-

cost way to heat drums and gas bottles. There are two versions available. One (Version A) is supplied with internal Pt100 sensor and temperature limiter to 180°C.

The other (Version B) is supplied complete with a built-in adjustable thermostat with a control range of 10°C to 218°C. An external controller-box is available.



3. DRUM HEATERS

### Area Specifications

Area classification	Nonhazardous, ordinary area
Ingress protection	IP65
Electrical protection class	Class I
Storage temperature	-20 to +50°C
Minimum installation temperature	-20°C

### Standard Manufacturing Sizes

Length	1760 / 1677 / 1384 mm ± 4%
Width	230 / 102 mm ± 2.5%

### Heater Construction

Type	Resistance heating cable
Material	Various alloys
Material of carrier	Version A is silicone or silicone-glass-silk. Version B is fibreglass reinforced silicone.

**Lead Connection**

Sensor type Version A optional Pt100

Connection length, lead cross section, maximum operating temperature, connection lead material and thermostat depend on design

**Technical Data**

Frequency 50-60 Hz

Maximum operating voltage 230 / 240 / 120 Vac

Maximum power 1100 / 1200 / 1000 W

Maximum operating temperature 218°C (or 180°C if optional temperature limiter is included)

Minimum bend radius, maximum area load and maximum compression strength depend on design

**Ordering Information**

Part number	For standard sizes (Ltr) (m <sup>2</sup> )	Length <sup>(1)</sup> (L) (mm)	Width <sup>(1)</sup> (H) (mm)	Nominal Voltage (Vac)	Nominal Power <sup>(2)</sup> (W)
<b>Version with internal Pt100 sensor and temperature limiter to 180°C (Version A)</b>					
171538-000	200	1760	230	230	1100
257692-000 (Controller for 1 band heater)				230	
972114-000 (Controller for 3 band heaters)				230	
<b>Versions with adjustable thermostat 10°C to 218°C (Version B)</b>					
791428-000	200	1677	102	240	1200
631912-000	110	1384	102	240	1000
118374-000	200	1677	102	120	1200
450166-000	110	1384	102	120	1000

<sup>(1)</sup> Tolerances < 400 (±2.5) / > 400 (±4.0)<sup>(2)</sup> Tolerances ±10%