

WITH MECHANICAL SEAL
AND SEALLESS



DRUM PUMPS STAINLESS STEEL

IF NO CONTAMINATION AND PRODUCT
CARRYOVER IS ALLOWED



FOOD



BEVERAGE



PHARMACEUTICAL



COSMETICS

Drum pumps stainless steel with mechanical seal (MS) and sealless (SL)

DRUM PUMPS STAINLESS STEEL

IF EASY CLEANING, DURABILITY AND EXPLOSION-PROOF ARE REQUIRED



PAINTS + COATINGS



ACIDS + BASES



SOLVENTS



SPECIAL APPLICATIONS, PLANT ENGINEERING



Our new pumps!

The quickest way to get to know us is to contact us directly. Save your precious time.

Contact us and we will do the rest for you.

Consulting service, product selection, project planning assistance and quote – fast and all free of charge.

Advantages

more ...

- practical
- variable
- complete
- hygienic
- solid
- robust
- imaginative
- fit for use
- modular
- individual

Sealed and sealless pumps types have grown closer to one another

The SD (Simple Disassembly) series is sealed with a mechanical seal (MS). In the SL series (sealless) there is an inner tube in the pump tube. The leakage unit depressurises the inner tube. The drive shaft is running within the inner tube. With no pressure difference between the inner tube and the outside ambient air no liquid can leave the pump, where the drive shaft comes out from the pump head. The pump is therefore always without leakage at the pump head.

Tel. +49 93 42 / 9 35 16-0
info@gruen-pumpen.de



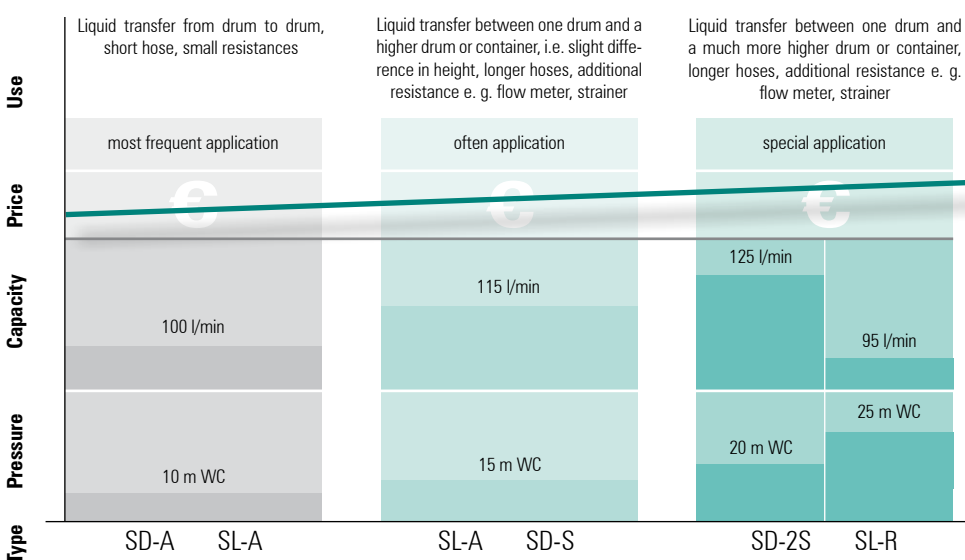
In this booklet you will learn a lot about grün-drum pumps. We are sure you will experience proof of our commitments and product statements when using our equipment.

Online you can learn interesting facts about 'grün-business-philosophy' in a three minute audio slideshow.

Worth seeing.







www.gruen-pumpen.de

The right pump for your application



drum pumps stainless steel with features for the top position

DRUM PUMPS STAINLESS STEEL

	SD-SS-	A	S	DL-SS-
important for your application				
large capacity		X		
high pressure			X	
viscosity up to 1.500 mPas (pd500)			X	
hydraulic tuning			X	
many different liquids				X
mixing function				
simple disassembly (SD)	X			
easy to clean	X			X
explosion proof				
continous work with induction motor			X	
tube length	container size	ord.-no.		
700 mm	hobcock 30l	631-0001	631-0006	
1000 mm	drum up to 220 l	631-0002	631-0007	
1200 mm	IBC up to 1000 l	631-0003	631-0008	
> 1200 mm	special container	on demand	on demand	
electrical motors without explosion proof				
p310 optimised in price	preferred combination	X		
p400 the ideal drive	improved hydr. performance	X	X	
pd500 silent worker	smooth product treatment		X	
electrical motors with explosion proof				
EX700 for hazardous locations	safety by power	X	X	
pd500 Ex	smooth product treatment		X	
compressed air motor for all applications				
d600 for hazardous locations	the power drive	X	X	

Drive motors, select the best drive for every

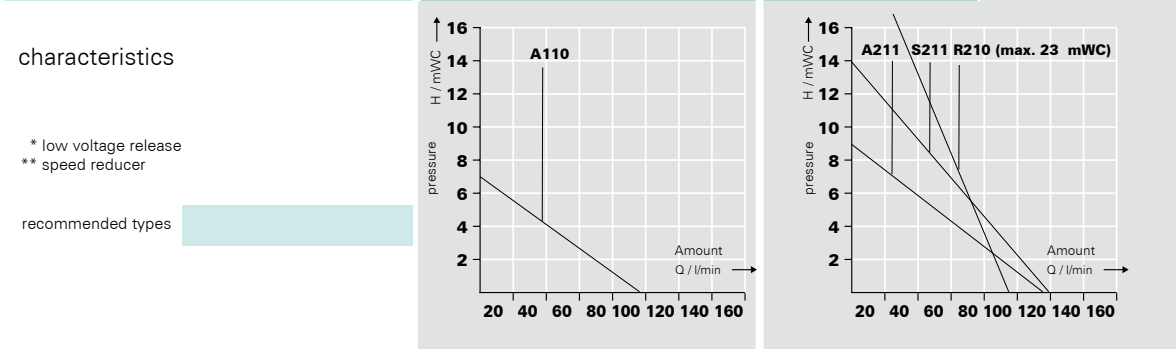
p310 optimised in price

p400 the ideal drive



properties	short and occasional use, it likes light and thin liquids, internal cooling	big resources in power and durability, works quickly and saves time, internal cooling
options	low voltage release (LVR) recommended according to EU-directives, speed reducer (SR) varies pressure and capacity	low voltage release (LVR) recommended according to EU-directives, speed reducer (SR) varies pressure and capacity, IP54 with TEFC (MA)
data		
power (W)	520	
voltage (V)	230	120
protection	IP24	
LVR*	optional	
SR**	optional	
weight (kg)	3,5	
	type of impeller s. p. 4/5	
max. spec. gravity (kg/l)	A	1,4
max. viscosity (mPas)	250	

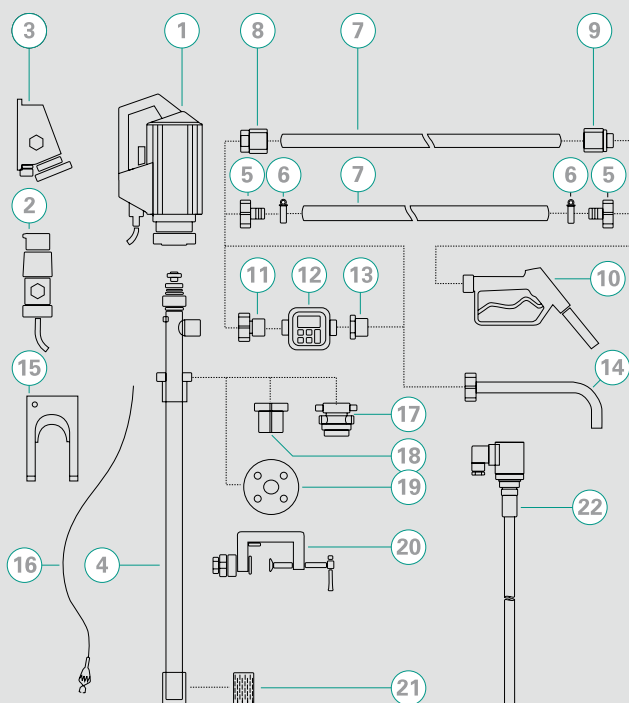
	ord.-no		ord.-no	
with LVR*	500-0016	500-0028	500-0023	500-0025
with SR** and LVR	500-0074	500-0060	500-0069	500-0066
without LVR	500-0017	500-0029	500-0024	500-0026
without LVR with SR	500-0054	500-0057	500-0056	500-0063
magnetic clutch , LVR	500-0030	500-0032	500-0034	500-0036
magnetic clutch , LVR, SR	500-0061	500-0062	500-0067	500-0068
TEFC (MA) IP54			500-0072	



Other pumps in separate catalogue.



ACCESSORIES



- 1 Drive motor
- 2 Explosion-proof plug
- 3 Explosion-proof socket
- 4 Pump tube
- 5 Hose connector
- 6 Hose clamps
- 7 Hose
- 8 Hose fittings
- 9 Hose fittings
- 10 Nozzle
- 11 Flow meter connection
- 12 Flow meter
- 13 Reducing piece
- 14 Discharge spout
- 15 Wall bracket
- 16 Equipotential bonding cable
- 17 Emission proof drum adapter
- 18 Drum adapter
- 19 Installation flange
- 20 Clamping device
- 21 Foot strainer
- 22 Level switch

Distributor:



ХЕНЛИХ ООД

Индустриална техника

+ коректна консултация!

HENNLICH

4003 Пловдив
ул. Брезовско шосе 147А, ет. 3
тел./факс 032 621 929
office@hennlich.bg
www.hennlich.bg

grün-pumpen gmbh

Otto-Schott-Str. 19

D-97877 Wertheim

Telefon +49 93 42 9 35 16-0

Telefax +49 93 42 9 35 16-29

info@gruen-pumpen.de

www.gruen-pumpen.de

Handelsregister:

Reg. Gericht Mannheim

HR B 570326

Sitz der Gesellschaft:

Wertheim

Geschäftsführer:

Ralph Dostmann, Dr. Thomas Sigel

US t. IdNr. D E 160765854

g[®]
grün-pumpen
take out, what's in.