

## Flow limiter WP

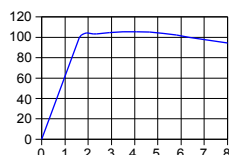


- Installation location as desired
- No need for auxiliary power

### Characteristics

Mechanical flow limiter for fluid media. If the volume flow is tending to increase, an elastomer is compressed. This achieves an almost constant flow value.

Flow value%  
of controlled value

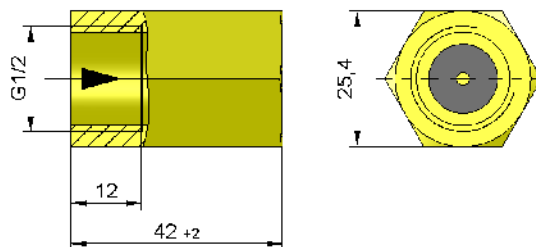


### Technical data

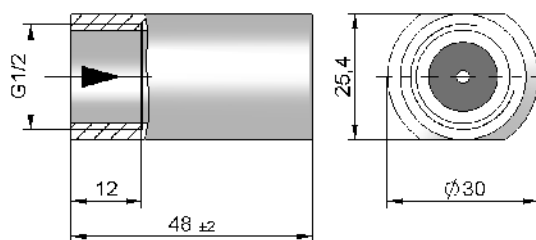
<b>Nominal width</b>	DN 15		
<b>Process connection</b>	female thread G 1/2		
<b>Controlled values</b>	0.5 l/min	4.0 l/min	12.0 l/min
	1.0 l/min	5.0 l/min	15.0 l/min
	1.5 l/min	7.0 l/min	18.0 l/min
	2.0 l/min	8.0 l/min	20.0 l/min
	3.2 l/min	10.0 l/min	
<b>Differential pressure</b>	1..10 bar		
<b>Tolerance</b>	±10 %		
<b>Pressure resistance</b>	PN 16 bar		
<b>Media temperature</b>	0..70 °C		
<b>Ambient temperature</b>	0..70 °C		
<b>Medium</b>	water		
<b>Materials medium-contact</b>	CW614N, NBR		
<b>Weight</b>	0.2 kg		
<b>Installation location</b>	as desired		

### Dimensions

#### Brass



#### Stainless steel



### Ordering code

1. 2. 3. 4.  
 WP -

= Special option

<b>1. Nominal width</b>	015	DN 15 - G 1/2
<b>2. Process connection</b>	G	female thread
<b>3. Connection material</b>	M	brass
	K	<input type="checkbox"/> stainless steel
<b>4. Controlled value H<sub>2</sub>O</b>	005	0.5 l/min
	010	1.0 l/min
	015	1.5 l/min
	020	2.0 l/min
	032	3.2 l/min
	040	4.0 l/min
	050	5.0 l/min
	070	7.0 l/min
	080	8.0 l/min
	100	10.0 l/min
	120	12.0 l/min
	150	15.0 l/min

### Ordering information

- Specify direction of flow, medium, and controlled value