

**Product Information**

**WK-015..025GM / K**

**Flow limiter WK**

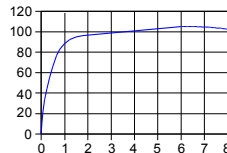


- Installation location as desired
- No need for auxiliary power

**Characteristics**

Mechanical flow limiter for fluid media. If the volume flow is tending to increase, an elastomer is compressed. This achieves an almost constant flow value.

Flow value%  
of controlled value

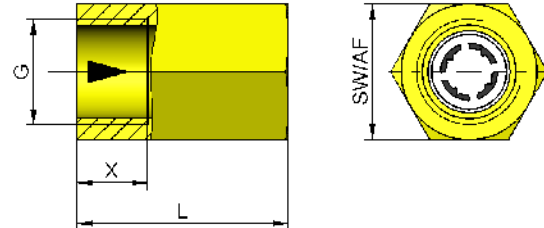


**Technical data**

<b>Nominal width</b>	DN 15..25	
<b>Connection type</b>	internal thread G 1/2..G 1	
<b>Controlled values</b>	1 l/min	5 l/min
	2 l/min	6 l/min
	3 l/min	8 l/min
<b>Differential pressure</b>	2..10 bar	
<b>Tolerance</b>	±15 % (3,0 l/min ±20 %, 2,0 l/min ±30 %, 1,0 l/min ±50 % )	
<b>Pressure resistance</b>	PN 100 bar	
<b>Media temperature</b>	0..65 °C	
<b>Ambient temperature</b>	0..65 °C	
<b>Medium</b>	water	
<b>Materials media-contact</b>	Brass construction: CW614N, POM, NBR, 1.4571	Stainless steel construction: 1.4305, POM, NBR, 1.4571
<b>Weight</b>	see table "Dimensions and weights"	
<b>Installation location</b>	as desired	

**Dimensions and weights**

G	Nominal width	Type	L	SW	X	Weight kg
G 1/2	DN 15	WK-015G.	40	30	12	0.18
G 3/4	DN 20	WK-020G.	40	36	12	0.18
G 1	DN 25	WK-025G.	60	46	20	0.70



**Ordering code**

1. 2. 3. 4.  
 WK -  G

<b>1. Nominal width</b>	
015	DN 15 - G 1/2
020	DN 20 - G 3/4
025	DN 25 - G 1
<b>2. Process connection</b>	
G	female thread
<b>3. Connection material</b>	
M	brass
K	stainless steel
<b>4. Controlled value H<sub>2</sub>O</b>	
001	1 l/min
002	2 l/min
003	3 l/min
005	5 l/min
006	6 l/min
008	8 l/min
010	10 l/min
012	12 l/min
015	15 l/min

**Options**

- Inlet side, internal thread / outlet side external thread
- Special values
- Selection
- Bypass

**Ordering information**

- Specify direction of flow, medium, and controlled value