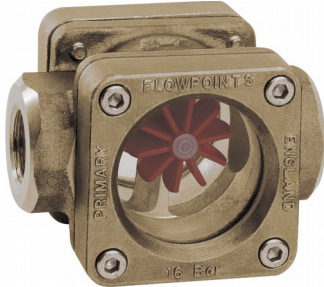


Product Information

FR-015..025GR

**Flow Indicator
FR-...GR**



- Rotor on both sides directly behind natural glass
- Installation location as desired

Characteristics

Mechanical flow indicator, for fluid media, with twin rotor for quantitative flow display. The rotor turns in proportion to the flow. Robust construction in red bronze/brass

Technical data

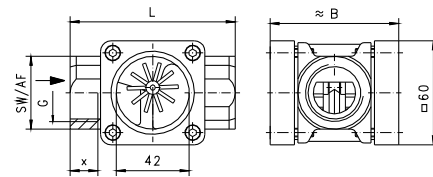
| | | |
|---------------------------------|---|--------------------------------|
| Nominal width | DN 15..25 | |
| Process connection | female thread G 1/2..G 1 | |
| Display range | 2.5..65 l/min | for details see table "Ranges" |
| Q_{max.} | to 65 l/min | |
| Pressure resistance | PN 16 bar | |
| Medium temperature | 0..+100 °C | |
| Ambient temperature | 0..+100 °C | |
| Materials medium-contact | Rg 5, CW614N, soda lime glass, POM Klingersil C4400 | |
| Medium | water (oils have a tendency to a higher running-up value) | |
| Weight | see table "Dimensions and weights" | |
| Installation location | as desired, except for inwards flow from above | |

Ranges

| G | Types | Running-up amount for rotor l/min H ₂ O | Q _{max.} recommended |
|-------|----------|---|----------------------------------|
| G 1/2 | FR-015GR | 2.5 | 25 |
| G 3/4 | FR-020GR | 3.0 | 45 |
| G 1 | FR-025GR | 5.0 | 65 |

Dimensions and weights

| G | Types | L | B | SW | X | Weight kg |
|-------|----------|----|----|----|----|--------------|
| G 1/2 | FR-015GR | 85 | 68 | 38 | 14 | 1.20 |
| G 3/4 | FR-020GR | | | | | 1.10 |
| G 1 | FR-025GR | 95 | 74 | 42 | 16 | 1.25 |



Ordering code

FR - 1. 2. 3.
 G R

| 1. Nominal width | |
|------------------------|---------------|
| 015 | DN 15 - G 1/2 |
| 020 | DN 20 - G 3/4 |
| 025 | DN 25 - G 1 |
| 2. Process connection | |
| G | female thread |
| 3. Connection material | |
| R | red bronze |