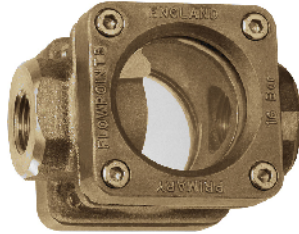


Product Information

FH-015..025GR

**Flow Indicator
 FH-...GR**



- No moving parts internally
- Installation location as desired
- For heavily soiled or coloured fluids
- Double-sided large-surface window
- Natural glass

Characteristics

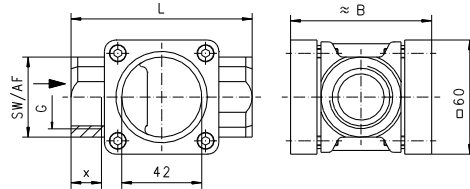
Devices made from solid red bronze, where the medium can be visually examined through the sight glass (fluid level, colour, bubbles,...).

Technical data

Nominal width	DN 15..25
Process connection	female thread G 1/2..G 1
Q_{max.}	G 1/2 - 25 l/min G 3/4 - 45 l/min G 1 - 65 l/min
Pressure resistance	PN 16 bar
Medium temperature	0..100 °C water -20..+200 °C oils
Ambient temperature	-20..+100 °C
Materials medium-contact	Rg 5, CW614N, soda lime glass, Klingsil C4400
Medium	water, oils
Weight	see table "Dimensions and weights"
Installation location	as desired

Dimensions and weights

G	Types	L	B	SW	X	Weight kg
G 1/2	FH-015GR	85	68	38	14	1.20
G 3/4	FH-020GR					1.10
G 1	FH-025GR	95	74	42	16	1.25



Ordering code

FH - 1. 2. 3.
 G R

1. Nominal width	
015	DN 15 - G 1/2
020	DN 20 - G 3/4
025	DN 25 - G 1
2. Process connection	
G	female thread
3. Connection material	
R	red bronze