

Ball Valve, Metal

Construction

The GEMÜ 712 manually operated 3-piece 2/2-way ball valve in stainless steel has a plastic coated lever.

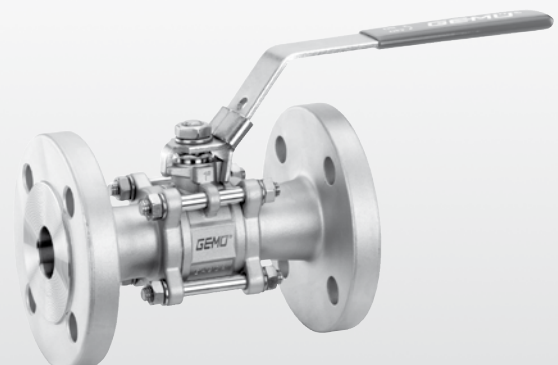
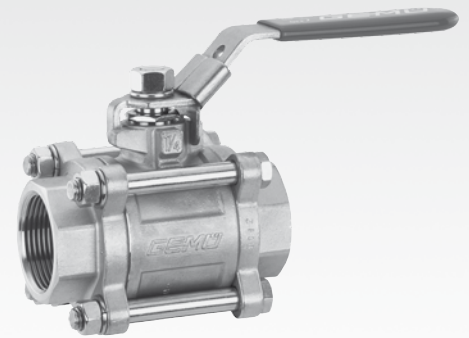
Features

- Suitable for inert and corrosive* liquid and gaseous media and steam
- The GEMÜ 712 ball valves comply with the safety requirements of Annex I of the European Pressure Equipment Directive 97/23/EC (PED) for fluids of group 1 and 2

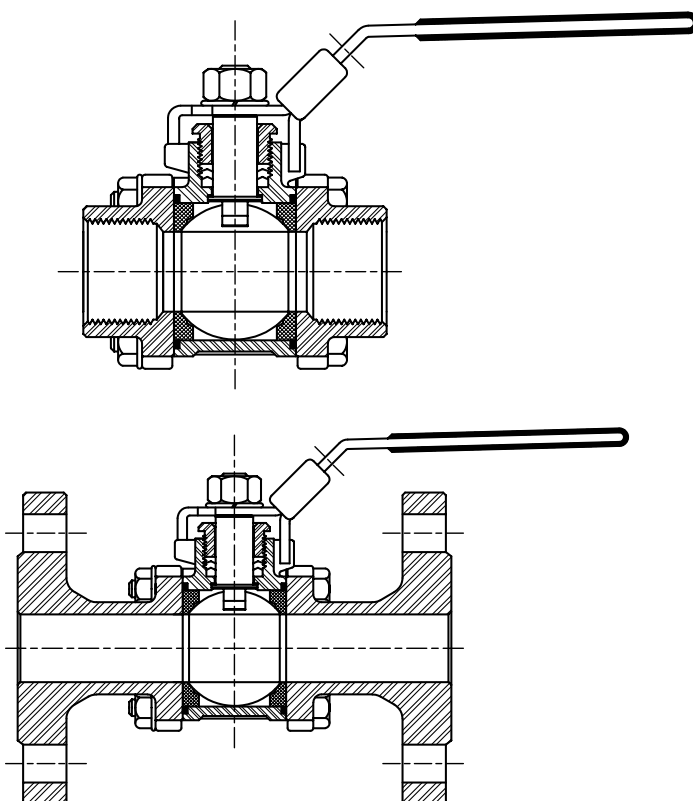
Advantages

- High flow capability
- Low weight
- Lockable and non-twisting lever

* siehe Angaben Betriebsmedium auf Seite 2



Sectional drawing



Technical data

Working medium

Corrosive, inert, gaseous and liquid media and steam which have no negative impact on the physical and chemical properties of the body and seal materials.

Maximum permissible pressure of working medium see diagram

(for water and non-hazardous media to which the body material is resistant)

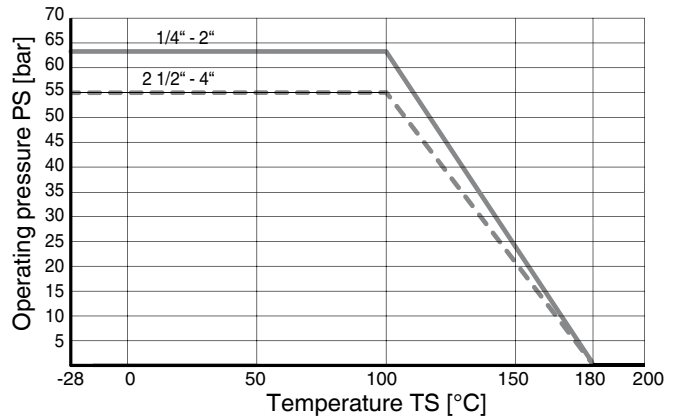
Maximum permissible operating temperature 150 °C

Maximum permissible ambient temperature 60 °C

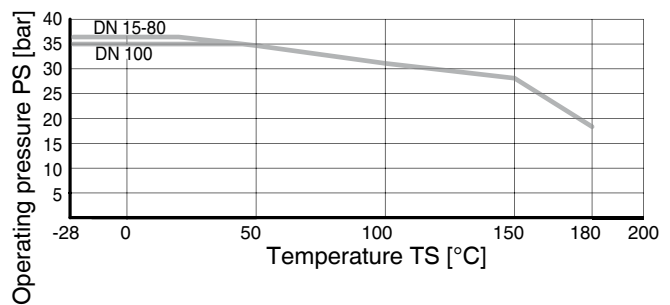
DN	NPS	Values		Weight			
		Kv [m³/h]	Cv [US gal/min]	Threaded sockets/ Butt weld spigots		Flanges	
8	1/4"	6.8	7.9	0.35	0.20	-	-
10	3/8"	6.8	7.9	0.40	0.23	-	-
15	1/2"	12.8	14.9	0.65	0.37	2.45	1.40
20	3/4"	29.1	33.9	0.80	0.46	3.50	2.00
25	1"	47.8	55.6	1.20	0.69	4.70	2.69
32	1 1/4"	72.6	84.5	1.95	1.12	5.90	3.37
40	1 1/2"	106.8	124.4	2.75	1.57	7.80	4.46
50	2"	213.7	248.9	4.50	2.57	11.3	6.46
65	2 1/2"	273.3	318.3	8.90	5.09	16.9	9.67
80	3"	495.3	577.0	12.9	7.38	23.9	13.67
100	4"	871.1	1014.8	22.5	12.87	34.9	19.96

Operating pressure - Temperature

Threaded sockets and butt weld spigots



Flanges



Data shown are typical non-binding values only!

The manufacturer assumes no liability whatsoever for any data selection not confirmed in writing.

Order data

Body configuration

2/2-way **D**

Connection

Threaded sockets DIN ISO 228 **1**

Threaded sockets NPT ANSI B 1.20.1 (DN 15 - 100) **31**

Flanges EN 1092 / PN40 / form B length EN 558, series 1, ISO 5752, basic series 1 **11**

Spigots **19**

Valve body material

1.4408 Investment casting (body) **37**
1.4401 Ball

Seal material

Seat: PTFE **5**

Control function

Manually operated / lockable **L**

Order example

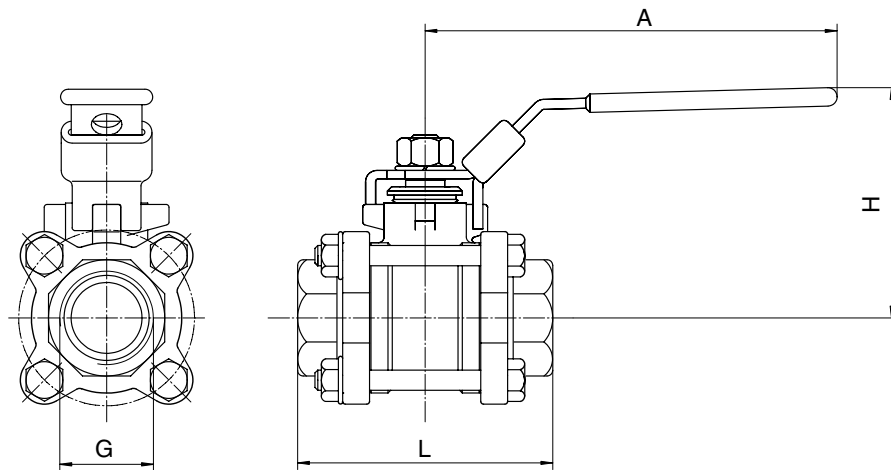
Order example	712	15	D	1	37	5	L
Type	712						
Nominal size		15					
Body configuration (code)			D				
Connection (code)				1			
Valve body material (code)					37		
Seal material (code)						5	
Control function (code)							L

Dimensions

Threaded sockets, connection code 1, 31

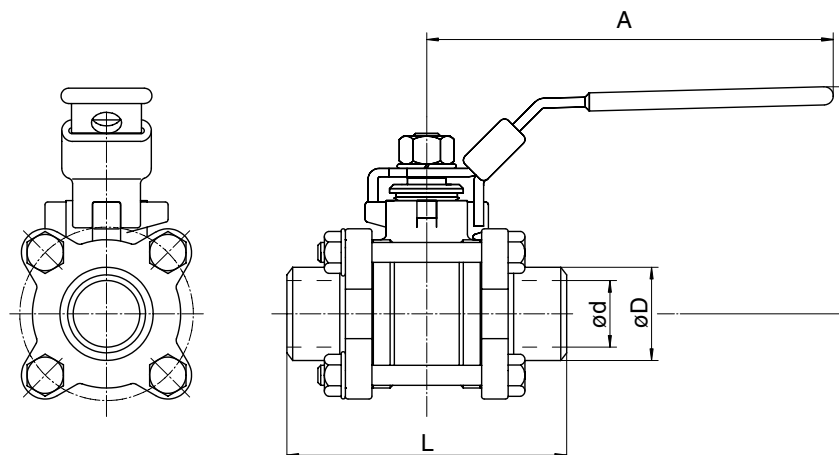
DN	A [mm]	A [inch]	H [mm]	H [inch]	L [mm]	L [inch]	G
8*	102	4.02	54	2.13	50	1.97	1/4"
10*	102	4.02	54	2.13	60	2.36	3/8"
15	132	5.20	64	2.52	75	2.95	1/2"
20	132	5.20	67	2.64	80	3.15	3/4"
25	167	6.57	75	2.95	90	3.54	1"
32	167	6.57	81	3.19	110	4.33	1 1/4"
40	192	7.56	90	3.54	120	4.72	1 1/2"
50	192	7.56	98	3.86	140	5.51	2"
65	252	9.92	137	5.39	185	7.28	2 1/2"
80	252	9.92	147	5.79	205	8.07	3"
100	282	11.10	175	6.89	240	9.45	4"

* only connection code 1



Butt weld spigots, connection code 19

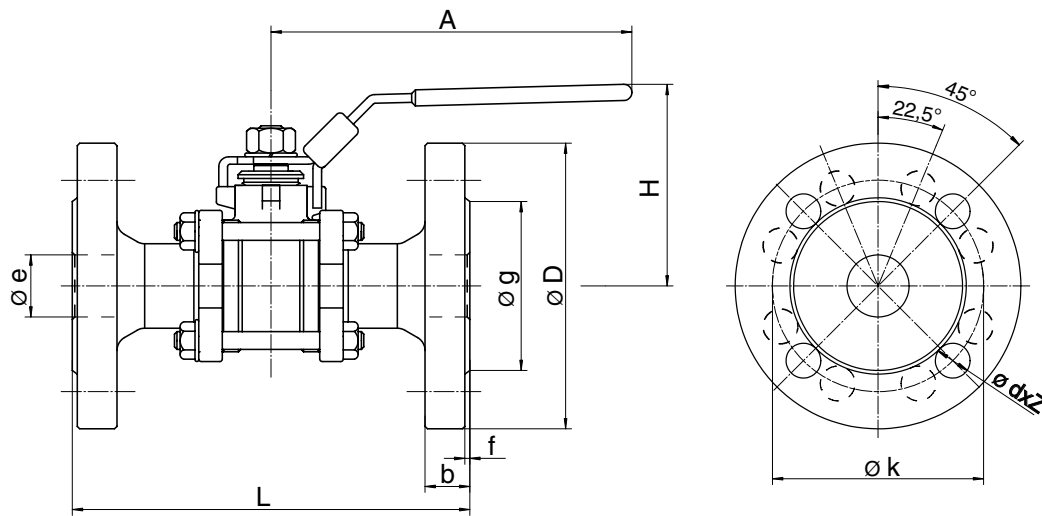
DN	A [mm]	A [inch]	H [mm]	H [inch]	L [mm]	L [inch]	øD [mm]	øD [inch]	ød [mm]	ød [inch]
8	102	4.02	54	2.13	50	1.97	16.2	0.64	11.6	0.46
10	102	4.02	54	2.13	60	2.36	17.5	0.69	12.7	0.50
15	132	5.20	64	2.52	75	2.95	22.7	0.89	16.0	0.63
20	132	5.20	67	2.64	80	3.15	27.5	1.08	20.0	0.79
25	167	6.57	75	2.95	90	3.54	34.0	1.34	25.0	0.98
32	167	6.57	81	3.19	110	4.33	42.7	1.68	32.0	1.26
40	192	7.56	90	3.54	120	4.72	48.6	1.91	38.0	1.50
50	192	7.56	98	3.86	140	5.51	60.5	2.38	50.0	1.97
65	252	9.92	137	5.39	185	7.28	76.3	3.00	65.0	2.56
80	252	9.92	147	5.79	205	8.07	90.0	3.54	80.0	3.15
100	282	11.10	175	6.89	240	9.45	116.0	4.57	100.0	3.94



Dimensions

Flanges, connection code 11 [mm]

DN	A	H	L	ø D	ø g	ø e	f	b	ø k	ø d	Z
15	132	64	130	95	45	15	2	16	65	14	4
20	132	67	150	105	58	20	2	18	75	14	4
25	167	75	160	115	68	25	2	18	85	14	4
32	167	81	180	140	78	32	2	18	100	18	4
40	192	90	200	150	88	38	3	18	110	18	4
50	192	98	230	165	102	50	3	20	125	18	4
65	252	137	290	185	122	65	3	22	145	18	8
80	252	147	310	200	138	80	3	24	160	18	8
100	282	175	350	235	162	100	3	24	190	22	8



For further ball valves, accessories and other products please see our Product Range catalogue and Price List. Contact GEMÜ.

GEMÜ® VALVES, MEASUREMENT
AND CONTROL SYSTEMS

